

# 115-LB CAPACITY COIN DRYER

AD-115



ADC™ built its reputation over the last 50 years on the AD Series dryer. With a passion for innovation and design, top-to-bottom quality, and the ability to customize your build, the AD Series dryers are a popular choice for vended laundry locations. In choosing an AD Series Dryer, you choose a user-friendly and reliable vended laundry system that helps you meet your customers' needs.

## COMPUTER OPERATED

ADC™ brought computer-operated dryers to the market, and today we continue to be a leader in applying technology to dryer operation.

The AD Series features an accessible design with easy-to-read LCD screens and a user-friendly multilingual interface.

Our advanced technology allows for self-diagnostic controls, which constantly monitor and give you up-to-date details and information on your machine.

## PAYMENT OPTIONS

The AD series offers an array of Customer Payment options.

1. The standard preconfigured mechanical coin drop.
2. Configurable Multi Coin Drop
3. The Card Reader Ready option

As times change, you can change your method for receiving payments as well.



### STANDARD FEATURES

- 115-lb capacity
- 33.10 cu. ft. basket volume
- 343,000 BTU/hr heat input, 2,100 cfm airflow
- Self-diagnostic microprocessor with patented auto-drying feature
- Steel door with gasketless glass
- Easy-to-clean lint drawer
- Fits through a standard 48" door opening
- Reversing basket is standard
- Available in gas, steam and electric heat

### OPTIONAL FEATURES

- Stainless steel front, cabinet & basket
- S.A.F.E. (Sensor Activated Fire Extinguishing System)

See [adclaundry.com](http://adclaundry.com) for warranty details.

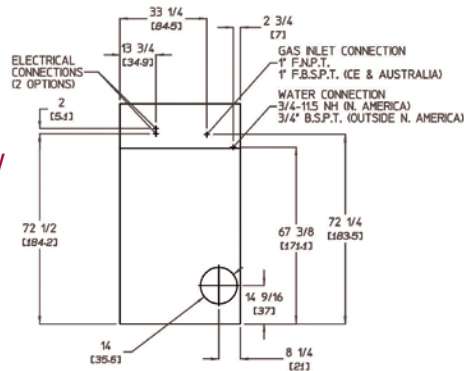
**VISIT [ADCLAUNDRY.COM](http://ADCLAUNDRY.COM) FOR MORE INFORMATION.**

# 115-LB CAPACITY COIN DRYER

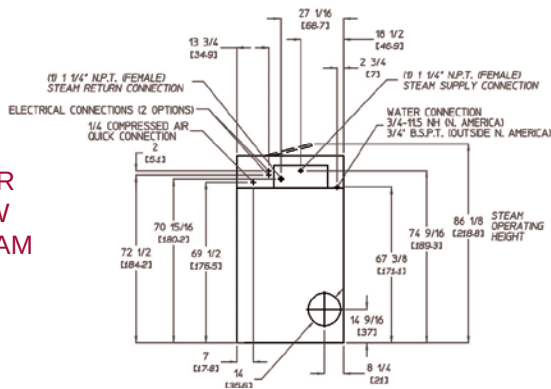
AD-115



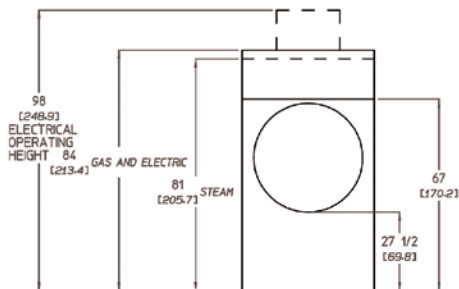
REAR VIEW  
GAS &  
ELECTRIC



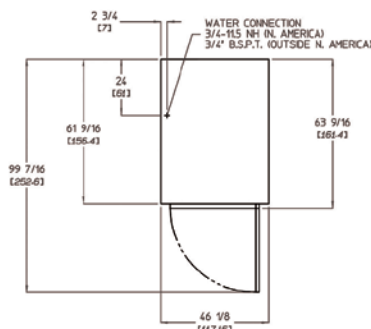
REAR VIEW  
STEAM



FRONT VIEW



PLAN VIEW



AD-115 COIN READY	ELECTRIC	GAS	STEAM
CAPACITY			
Maximum Capacity Dry Weight — lbs (kg)	115 (52.16)	115 (52.16)	115 (52.16)
Tumbler Diameter — in. (cm)	42 (106.68)	42 (106.68)	42 (106.68)
Tumbler Depth — in. (mm)	41-1/4 (104.78)	41-1/4 (104.78)	41-1/4 (104.78)
Tumbler Volume — cu. ft. (L)	33.10 (937.29)	33.10 (937.29)	33.10 (937.29)
Tumbler/Drive Motor — hp (kW)	3/4 (0.56)	3/4 (0.56)	3/4 (0.56)
Blower/Fan Motor — hp (kW)	3 (2.24)	3 (2.24)	3 (2.24)
DIMENSIONS			
Cabinet Width — in. (cm)	46-1/8 (117.16)	46-1/8 (117.16)	46-1/8 (117.16)
Cabinet Depth — in. (cm)	63-9/16 (161.4)	46-1/8 (117.16)	46-1/8 (117.16)
Door Opening (diameter) — in. (cm)	31-3/8 (79.69)	31-3/8 (79.69)	31-3/8 (79.69)
Door Sill Height — in. (cm)	27-1/2 (69.85)	27-1/2 (69.85)	27-1/2 (69.85)
S.A.F.E. Water Connection	3/4" F.N.P.T. / 11.5 N.H. (North America) 3/4" B.S.P.T. (Outside North America)		
Dryers per 20' / 40' Container	4 / 8		
Dryers per 48' / 53' Truck	9 / 10		
APPROXIMATE WEIGHT			
Approximate Net Weight — lb (kg)	1,260 (571.53)	1,260 (571.53)	1,555 (705.34)
Approximate Shipping Weight — lb (kg)	1,400 (635.03)	1,400 (635.03)	1,695 (768.84)
Voltage Available	208-575V 3ø 3,4w 50 / 60 Hz	208-575V 3ø 3,4w 50 / 60 Hz	208-575V 3ø 3,4w 50 / 60 Hz
Airflow 50 HZ — CFM (CMM)	1,750 (49.55)	1,750 (49.55)	1,750 (49.55)
Airflow 60 HZ — CFM (CMM)	2,100 (59.47)	2,100 (59.47)	2,100 (59.47)
Heat Input — BTU/hr (kcal/hr)	N/A	343,000 (86,435)	N/A
Gas Inlet Connection Size — in.	N/A	1" F.N.P.T. 1" F.B.S.P.T. (CE and Australia)	N/A
Exhaust Connection (diameter) — in. (cm)	14 (35.56)	14 (35.56)	14 (35.56)
Oven Size	60 kW / 204,700 BTU / 51,600 Kcal	N/A	N/A
	72 kW / 245,700 BTU / 61,900 Kcal	N/A	N/A
Steam Consumption (Max) — lb/hr (kg/hr)	N/A	N/A	365 (166)
Operating Steam Pressure — psi (bar)	N/A	N/A	125 (8.62) / 862 kPa
Compressed Air Connection**	N/A	N/A	1/8" N.P.T.
Compressed Air Volume** — cfm (cmh)	N/A	N/A	0.75 (0.02)
Boiler Horsepower (Normal Load) — Bph	N/A	N/A	11
Supply Connection†	N/A	N/A	(1) 1-1/4" M.N.P.T.
Return Connection†	N/A	N/A	(1) 1-1/4" M.N.P.T.

\*Air-operated steam damper system requires a clean, dry and regulated 80 psi \_ + 10 psi (.51 bar \_ + 0.68 bar) air supply.

\*\*Compressed air is not required with optional steam solenoid valve.

†Optional Steam Coil Connection Dier. Refer to Installation Manual.