

# 30-LB x2 CAPACITY COIN STACK DRYER

AD-236



ADC™ built its reputation over the last 50 years on the AD Series dryer. With a passion for innovation and design, top-to-bottom quality, and the ability to customize your build, the AD Series dryers are a popular choice for vended laundry locations. In choosing an AD Series Dryer, you choose a user-friendly and reliable vended laundry system that helps you meet your customers' needs.

## COMPUTER OPERATED

ADC™ brought computer-operated dryers to the market, and today we continue to be a leader in applying technology to dryer operation.

The AD Series features an accessible design with easy-to-read LCD screens and a user-friendly multilingual interface.

Our advanced technology allows for self-diagnostic controls, which constantly monitor and give you up-to-date details and information on your machine.

## PAYMENT OPTIONS

The AD series offers an array of Customer Payment options.

1. The standard preconfigured mechanical coin drop.
2. Configurable Multi Coin Drop
3. The Card Reader Ready option

As times change, you can change your method for receiving payments as well.



### STANDARD FEATURES

- 30-lb capacity per pocket
- 10.1 cu. ft. volume per pocket
- 160,000 BTU/hr heat input and 400 cfm per pocket
- Radial airflow
- Steel door with gasketless glass
- Single 8" diameter vent connection for both pockets
- Independent electrical connections for each pocket
- Independent microprocessor and coin drop for each pocket
- Single gas line connection
- Only 28-1/2" wide—fits through a standard 36" door
- Available in gas heat

### OPTIONAL FEATURES

- Stainless steel front, cabinet & basket
- S.A.F.E. (Sensor Activated Fire Extinguishing System)
- Available in 3-phase electric

See [adclaundry.com](http://adclaundry.com) for warranty details.

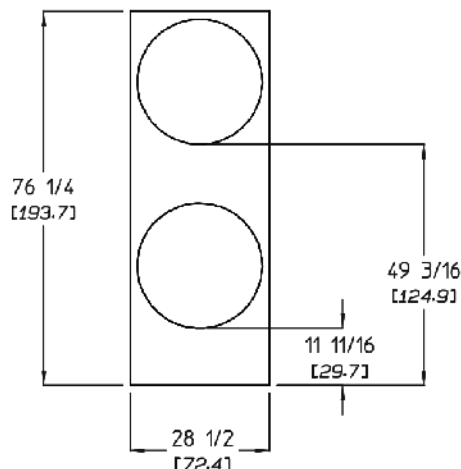
**VISIT [ADCLAUNDRY.COM](http://ADCLAUNDRY.COM) FOR MORE INFORMATION.**

# 30-LB x2 CAPACITY COIN STACK DRYER

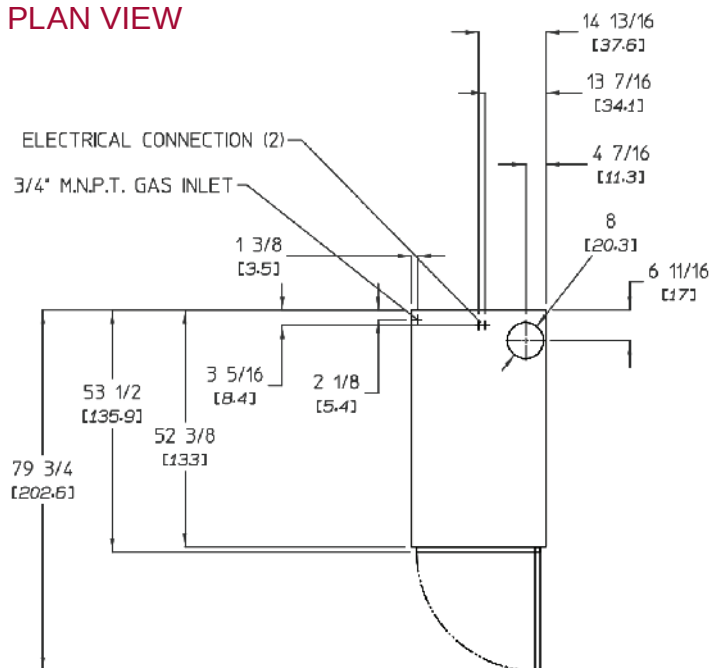
AD-236



## FRONT VIEW



## PLAN VIEW



AD-236 COIN READY	GAS
<b>CAPACITY</b>	
Maximum Capacity Dry Weight (per pocket) — lbs (kg)	30 (13.6)
Tumbler Diameter — in. (cm)	27-1/4 (69.22)
Tumbler Depth — in. (mm)	30 (76.2)
Tumbler Volume (per pocket) — cu. ft. (L)	10.1 (286)
Tumbler/Drive Motor (per pocket) — hp (kW)	1/2 (0.373)
Blower/Fan Motor (per pocket) — hp (kW)	1/2 (0.373)
<b>DIMENSIONS</b>	
Cabinet Width — in. (cm)	28-1/2 (72.4)
Cabinet Depth — in. (cm)	53-1/2 (135.9)
Cabinet Height — in. (cm)	76-1/4 (193.7)
Door Opening (diameter) — in. (cm)	21-1/2 (54.61)
Door Sill Height — in. (cm)	Top pocket 51-1/4 (130.2) Bottom pocket 13-1/2 (34.3)
Water Connection	N/A
Dryers per 20' / 40' Container	11 / 22
Dryers per 48' / 53' Truck	30 / 33
<b>APPROXIMATE WEIGHT</b>	
Approximate Net Weight — lb (kg)	850 (385.5)
Approximate Shipping Weight — lb (kg)	900 (408.2)
Voltage Available	120-480V 1,3ø 2,3w 50 / 60 Hz
Airflow 50 HZ — CFM (CMM)	333 (9.44)
Airflow 60 HZ — CFM (CMM)	400 (11.33)
Heat Input — BTU/hr (kcal/hr)	80,000 (20,160)
Gas Inlet Connection Size — in.	3/4 M.N.P.T.
Exhaust Connection (diameter) — in. (cm)	8 (20.32)