

30-LB CAPACITY COIN DRYER

AD-30V



ADC™ built its reputation over the last 50 years on the AD Series dryer. With a passion for innovation and design, top-to-bottom quality, and the ability to customize your build, the AD Series dryers are a popular choice for vended laundry locations. In choosing an AD Series Dryer, you choose a user-friendly and reliable vended laundry system that helps you meet your customers' needs.

COMPUTER OPERATED

ADC™ brought computer-operated dryers to the market, and today we continue to be a leader in applying technology to dryer operation.

The AD Series features an accessible design with easy-to-read LCD screens and a user-friendly multilingual interface.

Our advanced technology allows for self-diagnostic controls, which constantly monitor and give you up-to-date details and information on your machine.

PAYMENT OPTIONS

The AD series offers an array of Customer Payment options.

1. The standard preconfigured mechanical coin drop.
2. Configurable Multi Coin Drop
3. The Card Reader Ready option

As times change, you can change your method for receiving payments as well.



STANDARD FEATURES

- 30-lb capacity
- 12.5 cu. ft. basket volume
- 100,000 BTU/hr heat input, 460 cfm airflow
- Radial airflow
- Steel door with gasketless glass
- Easy-to-access lint compartment
- Fits through a standard 36" door
- Available in gas, steam and electric heat

OPTIONAL FEATURES

- Stainless steel front, cabinet & basket
- Reversing basket
- S.A.F.E. (Sensor Activated Fire Extinguishing System)

See adclaundry.com for warranty details.

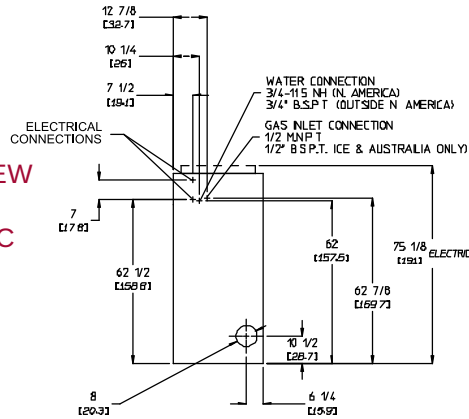
VISIT ADCLAUNDRY.COM FOR MORE INFORMATION.

30-LB CAPACITY COIN DRYER

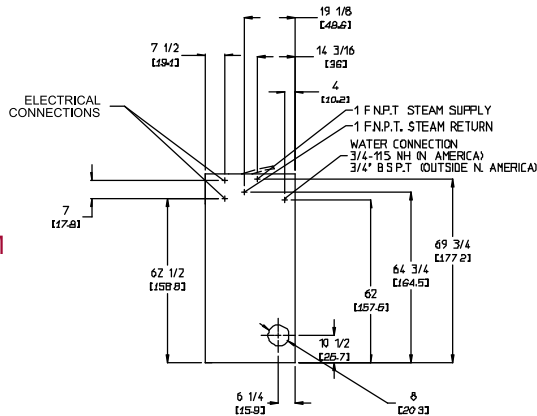
AD-30V



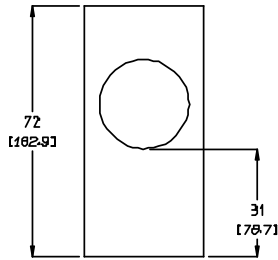
REAR VIEW
GAS &
ELECTRIC



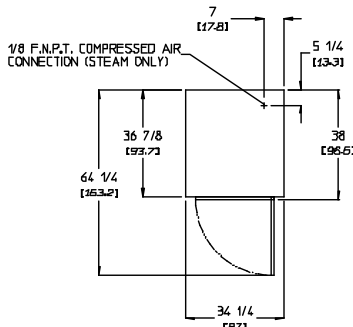
REAR
VIEW
STEAM



FRONT
VIEW



PLAN
VIEW



AD-30V COIN READY	ELECTRIC	GAS	STEAM**
CAPACITY			
Maximum Capacity Dry Weight — lbs (kg)	30 (13.6)	30 (13.6)	30 (13.6)
Tumbler Diameter — in. (cm)	32-3/4 (83.2)	32-3/4 (83.2)	32-3/4 (83.2)
Tumbler Depth — in. (mm)	25-5/8 (65.1)	25-5/8 (65.1)	25-5/8 (65.1)
Tumbler Volume — cu. ft. (L)	12.5 (353.9)	12.5 (353.9)	12.5 (353.9)
Tumbler / Drive Motor (non-reversing / reversing) — hp (kW)	1/2 (0.37) / 1/2 (0.37)fl	1/2 (0.37) / 1/2 (0.37)fl	1/2 (0.37) / 1/2 (0.37)fl
Blower / Fan Motor (non-reversing / reversing) — hp (kW)	N/A / 1/2 (0.37)*	N/A / 1/2 (0.37)*	N/A / 1/2 (0.37)*
DIMENSIONS			
Cabinet Width — in. (cm)	34-1/4 (87)	34-1/4 (87)	34-1/4 (87)
Cabinet Depth — in. (cm)	38 (98.5)	38 (98.5)	38 (98.5)
Cabinet Height — in. (cm)	72 (162.9)	72 (162.9)	72 (162.9)
Door Opening (diameter) — in. (cm)	21-1/2 (54.61)	21-1/2 (54.61)	21-1/2 (54.61)
Door Sill Height — in. (cm)	33-1/3 (84.15)	33-1/3 (84.15)	33-1/3 (84.15)
S.A.F.E. Water Connection	3/4" F.N.P.T. (11.5 N.H.) (North America) 3/4" B.S.P.T. (Outside North America)		
Dryers per 20' / 40' Container	12 / 26		
Dryers per 48' / 53' Container	30 / 32		
APPROXIMATE WEIGHT			
Approximate Net Weight — lb (kg)	534 (242)	534 (242)	593 (269)
Approximate Shipping Weight — lb (kg)	571 (259)	571 (259)	631 (286)
Voltage Available	120-480V 1,3ø 2,3,4w 50 / 60 Hz	120-480V 1,3ø 2,3w 50 / 60 Hz	120-480V 1,3ø 2,3w 50 / 60 Hz
Airflow 50 HZ — CFM (CMM)	383 (10.85)	383 (10.85)	383 (10.85)
Airflow 60 HZ — CFM (CMM)	460 (13)	460 (13)	460 (13)
Heat Input — BTU/hr (kcal/hr)	N/A	100,000 (25,200)	N/A
Gas Inlet Connection Size — in.	N/A	1/2" M.N.P.T. (male) 1/2" B.S.P.T. (female) (CE and Australia)	N/A
Exhaust Connection (diameter) — in. (cm)	8 (20.32)	8 (15.24)	8 (20.32)
Oven Size	20 kW / 68,200 BTU / 17,200 Kcal	N/A	N/A
	24 kW / 81,900 BTU / 20,600 Kcal	N/A	N/A
Steam Consumption (Max) — lb/hr (kg/hr)	N/A	N/A	140 (47.2)
Operating Steam Pressure — psi (bar)	N/A	N/A	125 (8.6)
Boiler Horsepower (Normal Load) — Bph	N/A	N/A	3.0
Supply Connection	N/A	N/A	1" F.N.P.T. (female)
Return Connection	N/A	N/A	1" F.N.P.T. (male)

*Reversing dryer available with 3-phase (3ø) 1/2 hp (0.373kW) motor standard.

**Specify air-operated or electromechanical steam damper system.

Air-operated steam damper system must be provided with clean, dry and regulated 80 psi \pm 10 psi (.51 bar \pm 0.68 bar) air supply.