

30-LB x2 CAPACITY COIN STACK DRYER

AD-30x2R



ADC™ built its reputation over the last 50 years on the AD Series dryer. With a passion for innovation and design, top-to-bottom quality, and the ability to customize your build, the AD Series dryers are a popular choice for vended laundry locations. In choosing an AD Series Dryer, you choose a user-friendly and reliable vended laundry system that helps you meet your customers' needs.

COMPUTER OPERATED

ADC™ brought computer-operated dryers to the market, and today we continue to be a leader in applying technology to dryer operation.

The AD Series features an accessible design with easy-to-read LCD screens and a user-friendly multilingual interface.

Our advanced technology allows for self-diagnostic controls, which constantly monitor and give you up-to-date details and information on your machine.

PAYMENT OPTIONS

The AD series offers an array of Customer Payment options.

1. The standard preconfigured mechanical coin drop.
2. Configurable Multi Coin Drop
3. The Card Reader Ready option

As times change, you can change your method for receiving payments as well.



STANDARD FEATURES

- 30-lb capacity per pocket
- Single-phase reversing
- 11 cu. ft. basket volume per pocket
- 72,000 BTU/hr heat input and 450 cfm per pocket
- Trans-axial airflow
- Dual micro-controls
- Steel door with gasketless glass
- Two independently controlled pockets
- Fits through a 32" door
- Available in gas heat
- Available in white front and cabinet
- Two-point roller support with center rear bearing system

OPTIONAL FEATURES

- Stainless steel or gray front, cabinet & basket
- S.A.F.E. (Sensor Activated Fire Extinguishing System)

See adclaundry.com for warranty details.

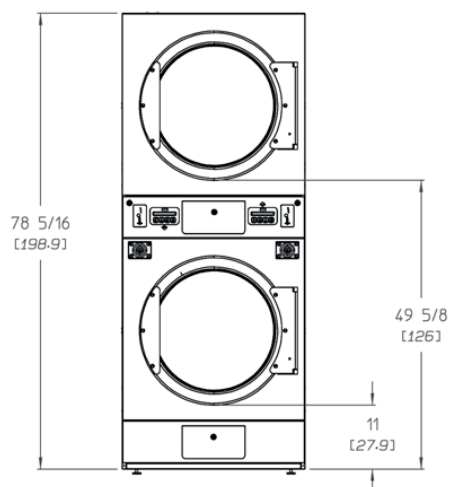
VISIT ADCLAUNDRY.COM FOR MORE INFORMATION.

30-LB x2 CAPACITY COIN STACK DRYER

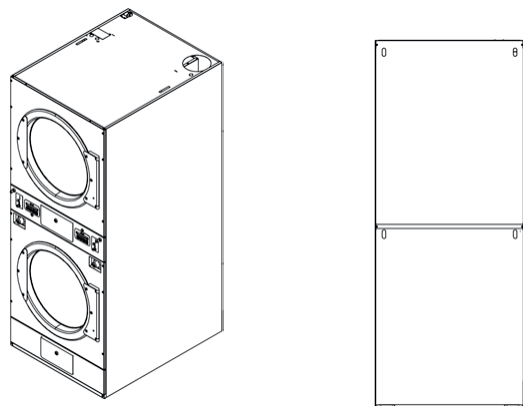
AD-30x2R



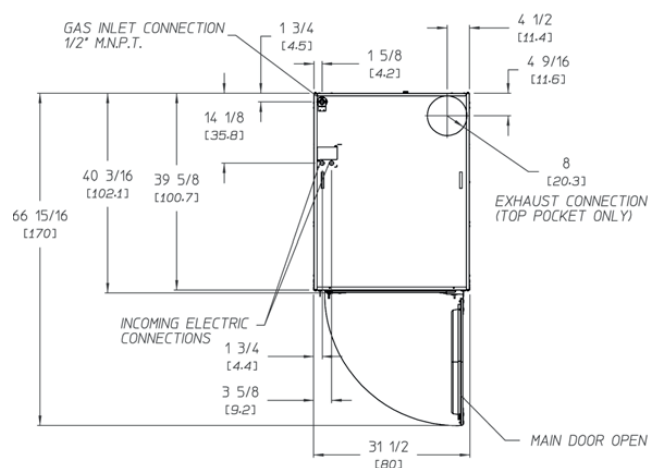
FRONT VIEW



REAR VIEW (GAS & ELECTRIC)



PLAN VIEW



AD-30x2R COIN READY	GAS
CAPACITY	
Maximum Capacity Dry Weight (per pocket) — lbs (kg)	30 (13.6)
Tumbler Diameter — in. (cm)	30 (76.2)
Tumbler Depth — in. (mm)	27 (68.5)
Tumbler Volume (per pocket) — cu. ft. (L)	11 (311.5)
Tumbler/Drive Motor (per pocket) — hp (kW)	1/4 (0.19)
Blower/Fan Motor (per pocket) — hp (kW)	1/2 (0.37)
DIMENSIONS	
Cabinet Width — in. (cm)	31-1/2" (80)
Cabinet Depth — in. (cm)	40-3/16 (102.1)
Cabinet Height — in. (cm)	78-5/16 (198.8)
Door Opening (diameter) — in. (cm)	21-1/2 (54.6)
Door Sill Height — in. (cm)	Top pocket 51-3/4 (131.4) Bottom pocket 13-1/8 (33.3)
Water Connection	N/A
Dryers per 20' / 40' Container	14 / 28
Dryers per 48' / 53' Truck	36 / 42
APPROXIMATE WEIGHT	
Approximate Net Weight — lb (kg)	520 (236)
Approximate Shipping Weight — lb (kg)	550 (249)
Voltage Available	120-240V 1Ø 2w 50 / 60 Hz
Airflow 50 HZ — CFM (CMM)	375 (10.6)
Airflow 60 HZ — CFM (CMM)	450 (12.74)
Heat Input — BTU/hr (kcal/hr)	72,000 (18,144)
Gas Inlet Connection Size — in.	1/2 M.N.P.T.
Exhaust Connection (diameter) — in. (cm)	8 (20.3)