

# 75-LB CAPACITY COIN DRYER

AD-78



ADC™ built its reputation over the last 50 years on the AD Series dryer. With a passion for innovation and design, top-to-bottom quality, and the ability to customize your build, the AD Series dryers are a popular choice for vended laundry locations. In choosing an AD Series Dryer, you choose a user-friendly and reliable vended laundry system that helps you meet your customers' needs.

## COMPUTER OPERATED

ADC™ brought computer-operated dryers to the market, and today we continue to be a leader in applying technology to dryer operation.

The AD Series features an accessible design with easy-to-read LCD screens and a user-friendly multilingual interface.

Our advanced technology allows for self-diagnostic controls, which constantly monitor and give you up-to-date details and information on your machine.

## PAYMENT OPTIONS

The AD series offers an array of Customer Payment options.

1. The standard preconfigured mechanical coin drop.
2. Configurable Multi Coin Drop
3. The Card Reader Ready option

As times change, you can change your method for receiving payments as well.



### STANDARD FEATURES

- 75-lb capacity
- 22.4 cu. ft. basket volume
- 204,000 BTU/hr heat input, 1,200 cfm airflow
- Radial airflow
- Steel door with gasketless glass
- Easy-to-access lint compartment
- 10" diameter vent connection
- Fits through a standard 36" door
- Extra-wide 44-1/2" diameter drum for excellent air circulation and drying
- Large 31-3/8" door
- Available in gas and electric heat

### OPTIONAL FEATURES

- Stainless steel front, cabinet & basket
- Reversing basket
- S.A.F.E. (Sensor Activated Fire Extinguishing System)

See [adclaundry.com](http://adclaundry.com) for warranty details.

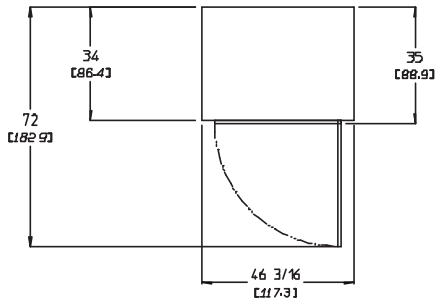
**VISIT [ADCLAUNDRY.COM](http://ADCLAUNDRY.COM) FOR MORE INFORMATION.**

# 75-LB CAPACITY COIN DRYER

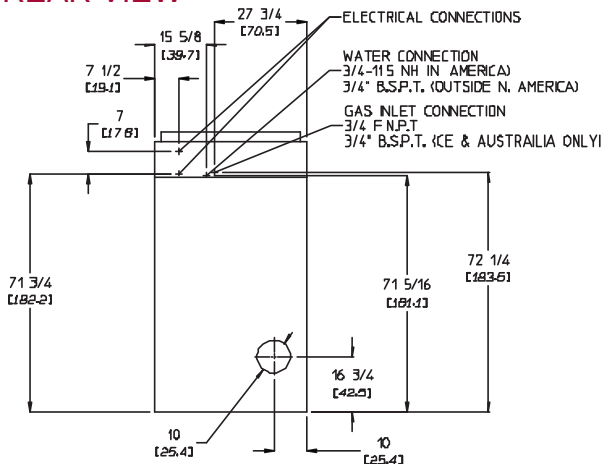
AD-78



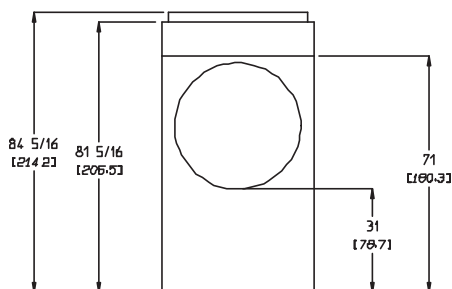
## PLAN VIEW



## REAR VIEW



## FRONT VIEW



AD-78 COIN READY	ELECTRIC	GAS
CAPACITY		
Maximum Capacity Dry Weight — lbs (kg)	75 (34.02)	75 (34.02)
Tumbler Diameter — in. (cm)	44-1/2 (113.03)	44-1/2 (113.03)
Tumbler Depth — in. (mm)	24-7/8 (63.18)	24-7/8 (63.18)
Tumbler Volume — cu. ft. (L)	22.40 (634.30)	22.40 (634.30)
Tumbler / Drive Motor — hp (kW)	1* (0.75)	1* (0.75)
Blower / Fan Motor — hp (kW)	1/2 (0.37)	1/2 (0.37)
DIMENSIONS		
Cabinet Width — in. (cm)	46-3/16 (117.3)	46-3/16 (117.3)
Cabinet Depth — in. (cm)	35 (88.9)	35 (88.9)
Cabinet Height — in. (cm)	84-5/16 (214.2)	84-5/16 (214.2)
Door Opening (diameter) — in. (cm)	31-3/8 (79.69)	31-3/8 (79.69)
Door Sill Height — in. (cm)	33-1/3 (78.74)	33-1/3 (78.74)
S.A.F.E. Water Connection	3/4" -11.5 N.H. (North America) 3/4" B.S.P.T. (Outside North America)	
Dryers per 20' / 40' Container	10 / 20	
Dryers per 48' / 53' Container	25 / 27	
APPROXIMATE WEIGHT		
Approximate Net Weight — lb (kg)	888 (402.79)	888 (402.79)
Approximate Shipping Weight — lb (kg)	938 (425.47)	938 (425.47)
Voltage Available	120-480V 1,3ø 2,3,4w 50 / 60 Hz	120-480V 1,3ø 2,3w 50 / 60 Hz
Airflow 50 HZ — CFM (CMM)	1,000 (28.31)	1,000 (28.31)
Airflow 60 HZ — CFM (CMM)	1,200 (33.98)	1,200 (33.98)
Heat Input — BTU/hr (kcal/hr)	N/A	204,000 (51,407)
Gas Inlet Connection Size — in.	N/A	3/4" F.N.P.T. 3/4" B.S.P.T. (CE and Australia)
Exhaust Connection (diameter) — in. (cm)	10 (25.40)	10 (25.40)
Oven Size	24 kW / 81,900 BTU / 20,600 Kcal	N/A
	36 kW / 122,800 BTU / 31,000 Kcal	N/A

\*For single-phase (1ø) dryers, use 1 motor: 1 hp drive/fan. For three-phase (3ø) non-reversing dryers, use 1 motor: 1 hp drive/fan; and for three-phase (3ø) reversing dryers, use 2 motors: 1 hp fan and 1/2 hp drive.