

# 115-LB CAPACITY OPL DRYER

AD-115



ADC™ built its reputation over the last 50 years on the AD Series dryer. With a passion for innovation and design, top-to-bottom quality, and the ability to customize your build, the AD Series dryers are a popular choice for on-premises laundries around the world. From hotels to hospitals and nursing homes to health clubs, the AD Series OPL dryers, offer a user-friendly and reliable on-premises laundry system that helps facilities maintain lower overhead and smooth day-to-day operations.

## S.A.F.E.

Sensor Activated Fire Extinguishing system (S.A.F.E.) is a controlled extinguisher that automatically detects fires in the dryer, douses them with water and alerts you that the system has been activated. The SAFE system helps to protect your facility whether the dryer is in operation or in an idle state.

## COMPUTER OPERATED

ADC™ brought computer-operated dryers to the market, and today we continue to be a leader in applying technology to dryer operation.

The AD Series features an accessible design with easy-to-read LCD screens and a user-friendly multilingual interface.

Our advanced technology allows for self-diagnostic controls, which constantly monitor and give you up-to-date details and information on your machine.



### STANDARD FEATURES

- 115-lb capacity
- 33.10 cu. ft. basket volume
- 343,000 BTU/hr heat input, 2,100 cfm airflow
- Self-diagnostic microprocessor with patented auto-drying feature
- Steel door with gasketless glass
- Easy-to-clean lint drawer
- Fits through a standard 48" door opening
- Reversing basket is standard
- Available in gas, steam and electric heat

### OPTIONAL FEATURES

- Stainless steel front, cabinet & basket
- S.A.F.E. (Sensor Activated Fire Extinguishing System)

See [adclaundry.com](http://adclaundry.com) for warranty details.

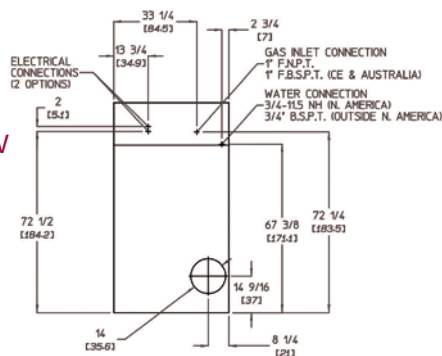
VISIT [ADCLAUNDRY.COM](http://ADCLAUNDRY.COM) FOR MORE INFORMATION.

# 115-LB CAPACITY OPL DRYER

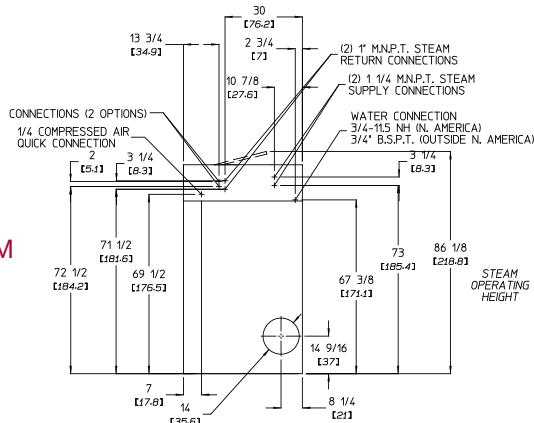
AD-115



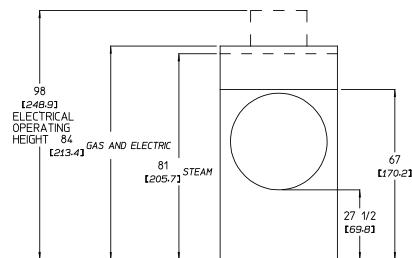
REAR VIEW  
GAS &  
ELECTRIC



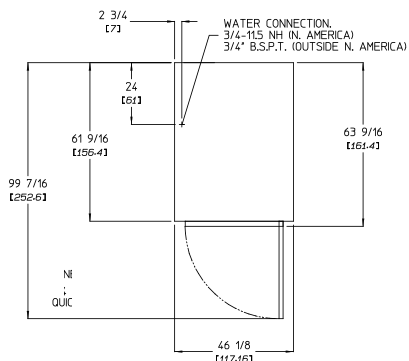
REAR VIEW  
STEAM



FRONT VIEW



PLAN VIEW



AD-115 OPL	ELECTRIC	GAS	STEAM
CAPACITY			
Maximum Capacity Dry Weight — lbs (kg)	115 (52.16)	115 (52.16)	115 (52.16)
Tumbler Diameter — in. (cm)	42 (106.68)	42 (106.68)	42 (106.68)
Tumbler Depth — in. (mm)	41-1/4 (104.78)	41-1/4 (104.78)	41-1/4 (104.78)
Tumbler Volume — cu. ft. (L)	33.10 (937.29)	33.10 (937.29)	33.10 (937.29)
Tumbler/Drive Motor — hp (kW)	3/4 (0.56)	3/4 (0.56)	3/4 (0.56)
Blower/Fan Motor — hp (kW)	3 (2.24)	3 (2.24)	3 (2.24)
DIMENSIONS			
Cabinet Width — in. (cm)	46-1/8 (117.16)	46-1/8 (117.16)	46-1/8 (117.16)
Cabinet Depth — in. (cm)	63-9/16 (161.4)	63-9/16 (161.4)	63-9/16 (161.4)
Cabinet Height — in. (cm)	98 (248.9)	84 (213.4)	86-1/8 (218.8)
Door Opening (diameter) — in. (cm)	31-3/8 (79.69)	31-3/8 (79.69)	31-3/8 (79.69)
Door Sill Height — in. (cm)	27-1/2 (69.85)	27-1/2 (69.85)	27-1/2 (69.85)
S.A.F.E. Water Connection — in.	3/4 - 11.5 NH (North America) 3/4 B.S.P.T. (Outside North America)	3/4 - 11.5 NH (North America) 3/4 B.S.P.T. (Outside North America)	3/4 - 11.5 NH (North America) 3/4 B.S.P.T. (Outside North America)
Dryers per 20' / 40' Container	4 / 8	4 / 8	4 / 8
Dryers per 48' / 53' Truck	9 / 10	9 / 10	9 / 10
APPROXIMATE WEIGHT			
Approximate Net Weight — lb (kg)	1,260 (571.53)	1,260 (571.53)	1,555 (705.34)
Approximate Shipping Weight — lb (kg)	1,400 (635.03)	1,400 (635.03)	1,695 (768.84)
Voltage Available	208-575V 3ø 3,4w 50 / 60 Hz	208-575V 3ø 3,4w 50 / 60 Hz	208-575V 3ø 3,4w 50 / 60 Hz
Airflow 50 HZ — CFM (CMM)	1,750 (44.55)	1,750 (44.55)	1,750 (44.55)
Airflow 60 HZ — CFM (CMM)	2,100 (59.47)	2,100 (59.47)	2,100 (59.47)
Heat Input — BTU/hr (kcal/hr)	N/A	343,000 (86,435)	N/A
Gas Inlet Connection Size — in.	N/A	1 F.N.P.T. 1 F.B.S.P.T. (CE and Australia Only)	N/A
Exhaust Connection (diameter) — in. (cm)	14 (35.56)	14 (35.56)	14 (35.56)
Oven Size	60 kW / 204,700 BTU / 51,600 Kcal	N/A	N/A
	72 kW / 245,700 BTU / 61,900 Kcal	N/A	N/A
Steam Consumption — lb/hr (kg/hr)	N/A	N/A	375 (170.10)
Operating Steam Pressure — psi (bar)	N/A	N/A	125 (8.6)
Compressed Air Volume — cfm (cmh)	N/A	N/A	0.75 (0.02)
Boiler Horsepower (Normal Load) — Bph	N/A	N/A	11
Supply Connection — in.	N/A	N/A	1-1/4 M.N.P.T.
Return Connection — in.	N/A	N/A	(2) 1 M.N.P.T.