

# 120-LB CAPACITY OPL DRYER

AD-120



ADC™ built its reputation over the last 50 years on the AD Series dryer. With a passion for innovation and design, top-to-bottom quality, and the ability to customize your build, the AD Series dryers are a popular choice for on-premises laundries around the world. From hotels to hospitals and nursing homes to health clubs, the AD Series OPL dryers, offer a user-friendly and reliable on-premises laundry system that helps facilities maintain lower overhead and smooth day-to-day operations.

## S.A.F.E.

Sensor Activated Fire Extinguishing system (S.A.F.E.) is a controlled extinguisher that automatically detects fires in the dryer, douses them with water and alerts you that the system has been activated. The SAFE system helps to protect your facility whether the dryer is in operation or in an idle state.

## COMPUTER OPERATED

ADC™ brought computer-operated dryers to the market, and today we continue to be a leader in applying technology to dryer operation.

The AD Series features an accessible design with easy-to-read LCD screens and a user-friendly multilingual interface.

Our advanced technology allows for self-diagnostic controls, which constantly monitor and give you up-to-date details and information on your machine.



### STANDARD FEATURES

- 120-lb capacity
- 38.10 cu. ft. basket volume
- 375,000 BTU/hr heat input, 2,150 cfm airflow
- Radial airflow
- Self-diagnostic microprocessor with patented auto-drying feature
- Steel door with gasketless glass
- Reversing basket is standard
- Available in gas, steam and electric heat

### OPTIONAL FEATURES

- Stainless steel front, cabinet & basket
- S.A.F.E. (Sensor Activated Fire Extinguishing System)

See [adclaundry.com](http://adclaundry.com) for warranty details.

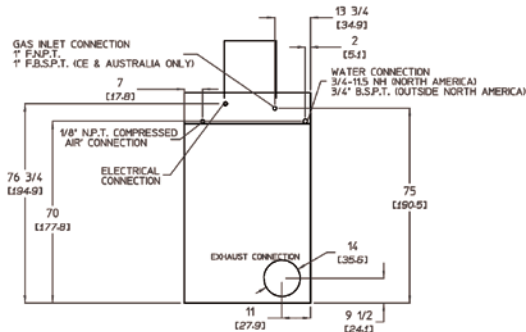
**VISIT [ADCLAUNDRY.COM](http://ADCLAUNDRY.COM) FOR MORE INFORMATION.**

# 120-LB CAPACITY OPL DRYER

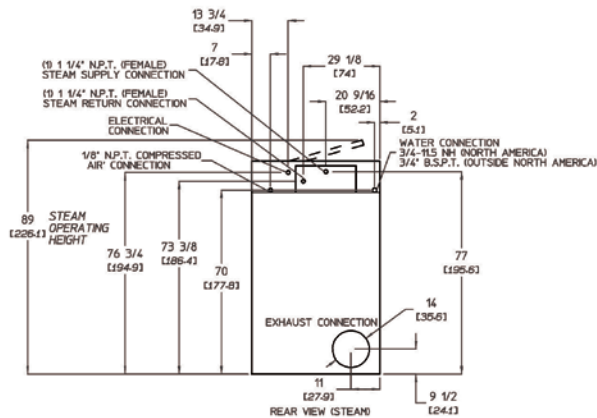
AD-120



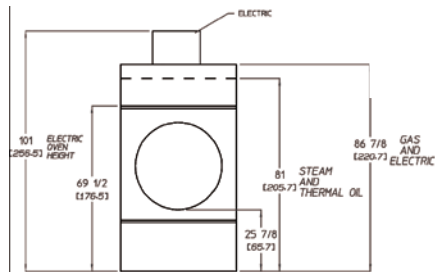
REAR VIEW  
GAS &  
ELECTRIC



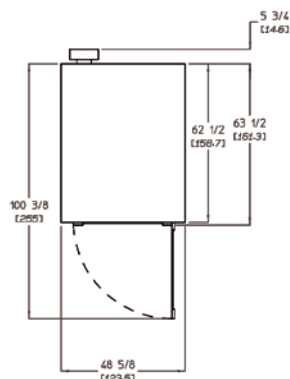
REAR VIEW  
STEAM



FRONT  
VIEW



PLAN  
VIEW



\*Air-operated steam damper system must be provided with clean, dry and regulated 80 psi  $\pm$  10 psi (5.51 bar  $\pm$  0.68 bar) air supply.  
\*\*Compressed air is not required with optional steam solenoid valve.  
†Optional Steam Coil Connection Differ. Refer to Installation Manual.

AD-120 OPL	ELECTRIC	GAS	STEAM
CAPACITY			
Maximum Capacity Dry Weight — lbs (kg)	120 (54.43)	120 (54.43)	120 (54.43)
Tumbler Diameter — in. (cm)	44-5/8 (113.35)	44-5/8 (113.35)	44-5/8 (113.35)
Tumbler Depth — in. (mm)	42-1/8 (107)	42-1/8 (107)	42-1/8 (107)
Tumbler Volume — cu. ft. (L)	38.10 (1,078.87)	38.10 (1,078.87)	38.10 (1,078.87)
Tumbler/Drive Motor — hp (kW)	3/4 (0.56)	3/4 (0.56)	3/4 (0.56)
Blower/Fan Motor — hp (kW)	3 (2.24)	3 (2.24)	3 (2.24)
DIMENSIONS			
Cabinet Width — in. (cm)	48-5/8 (123.5)	48-5/8 (123.5)	48-5/8 (123.5)
Cabinet Depth — in. (cm)	63-1/2 (161.3)	63-1/2 (161.3)	63-1/2 (161.3)
Door Opening (diameter) — in. (cm)	31-3/8 (79.69)	31-3/8 (79.69)	31-3/8 (79.69)
Door Sill Height — in. (cm)	25-7/8 (65.72)	25-7/8 (65.72)	25-7/8 (65.72)
S.A.F.E. Water Connection — in.	3/4 - 11.5 NH F.N.P.T. (North America) 3/4 B.S.P.T. (Outside North America)	3/4 - 11.5 NH F.N.P.T. (North America) 3/4 B.S.P.T. (Outside North America)	3/4 - 11.5 NH F.N.P.T. (North America) 3/4 B.S.P.T. (Outside North America)
Dryers per 20' / 40' Container	3 / 7	3 / 7	3 / 7
Dryers per 48' / 53' Truck	9 / 10	9 / 10	9 / 10
APPROXIMATE WEIGHT			
Approximate Net Weight — lb (kg)	1,500 (680.4)	1,440 (653.17)	1,421 (644.55)
Approximate Shipping Weight — lb (kg)	1,555 (705.3)	1,500 (680.4)	1,561 (708.06)
Voltage Available	208-575V 3 $\phi$ 3,4w 50 / 60 Hz	208-575V 3 $\phi$ 3,4w 50 / 60 Hz	208-575V 3 $\phi$ 3,4w 50 / 60 Hz
Airflow 50 HZ — CFM (CMM)	1,791 (50.71)	1,791 (50.71)	1,791 (50.71)
Airflow 60 HZ — CFM (CMM)	2,150 (60.88)	2,150 (60.88)	2,150 (60.88)
Heat Input — BTU/hr (kcal/hr)	N/A	375,000 (94,498)	N/A
Gas Inlet Connection Size — in.	N/A	1 F.N.P.T. 1 F.B.S.P.T. (CE and Australia Only)	N/A
Exhaust Connection (diameter) — in. (cm)	14 (35.56)	14 (35.56)	14 (35.56)
Oven Size	72 kW / 245,700 BTU / 61,900 Kcal	N/A	N/A
	75.2 kW / 258,000 BTU / 65,000 Kcal	N/A	N/A
Steam Consumption — lb/hr (kg/hr)	N/A	N/A	365 (166)
Operating Steam Pressure — psi (bar)	N/A	N/A	125 (8.6) 862 kPa
Compressed Air Connection** — in.	N/A	N/A	1/8 N.P.T.
Compressed Air Volume** — cfm (cmh)	N/A	N/A	0.75 (0.02)
Boiler Horsepower (Normal Load) — Bph	N/A	N/A	13
Supply Connection† — in.	N/A	N/A	(2) 1-1/4 M.N.P.T.
Return Connection† — in.	N/A	N/A	(2) 1 M.N.P.T.