

170-LB CAPACITY OPL DRYER

AD-170



ADC™ built its reputation over the last 50 years on the AD Series dryer. With a passion for innovation and design, top-to-bottom quality, and the ability to customize your build, the AD Series dryers are a popular choice for on-premises laundries around the world. From hotels to hospitals and nursing homes to health clubs, the AD Series OPL dryers, offer a user-friendly and reliable on-premises laundry system that helps facilities maintain lower overhead and smooth day-to-day operations.

S.A.F.E.

Sensor Activated Fire Extinguishing system (S.A.F.E.) is a controlled extinguisher that automatically detects fires in the dryer, douses them with water and alerts you that the system has been activated. The SAFE system helps to protect your facility whether the dryer is in operation or in an idle state.

COMPUTER OPERATED

ADC™ brought computer-operated dryers to the market, and today we continue to be a leader in applying technology to dryer operation.

The AD Series features an accessible design with easy-to-read LCD screens and a user-friendly multilingual interface.

Our advanced technology allows for self-diagnostic controls, which constantly monitor and give you up-to-date details and information on your machine.



STANDARD FEATURES

- 170-lb capacity
- 51.20 cu. ft. basket volume
- 550,000 BTU/hr heat input, 3,700 cfm airflow
- Radial airflow
- Self-diagnostic microprocessor with patented auto-drying feature
- Steel door with gasketless glass
- Reversing basket is standard
- Available in gas, steam and electric heat

OPTIONAL FEATURES

- Stainless steel front, cabinet & basket
- S.A.F.E. (Sensor Activated Fire Extinguishing System)

See adclaundry.com for warranty details.

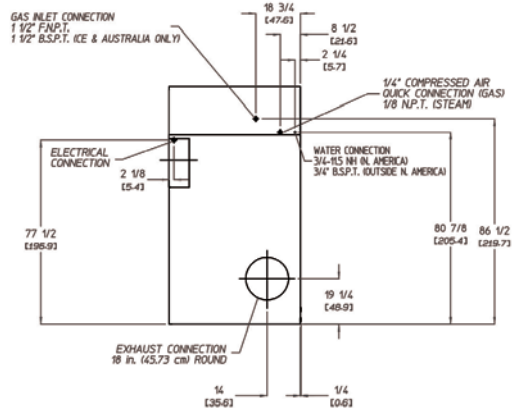
VISIT ADCLAUNDRY.COM FOR MORE INFORMATION.

170-LB CAPACITY OPL DRYER

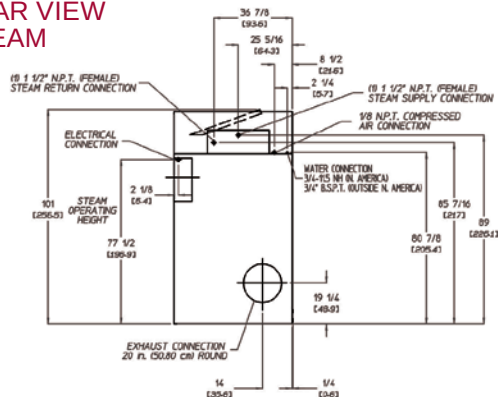
AD-170



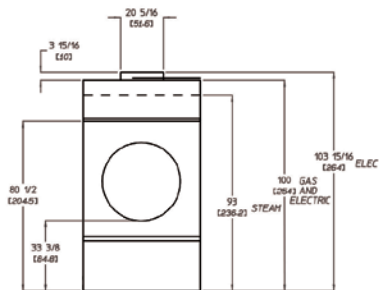
REAR VIEW GAS & ELECTRIC



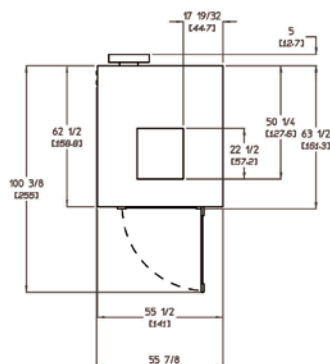
REAR VIEW STEAM



FRONT VIEW



PLAN VIEW



| AD-170 OPL | ELECTRIC | GAS | STEAM |
|--|--|--|--|
| CAPACITY | | | |
| Maximum Capacity Dry Weight — lbs (kg) | 170 (77.11) | 170 (77.11) | 170 (77.11) |
| Tumbler Diameter — in. (cm) | 51-1/2 (130.81) | 44-5/8 (113.35) | 44-5/8 (113.35) |
| Tumbler Depth — in. (mm) | 42-1/2 (107.95) | 42-1/8 (107) | 42-1/8 (107) |
| Tumbler Volume — cu. ft. (L) | 51.20 (1,449.82) | 38.10 (1,078.87) | 38.10 (1,078.87) |
| Tumbler/Drive Motor — hp (kW) | 1 (0.75) | 1 (0.75) | 1 (0.75) |
| Blower/Fan Motor — hp (kW) | 7-1/2 (5.59) | 7-1/2 (5.59) | 7-1/2 (5.59) |
| DIMENSIONS | | | |
| Cabinet Width — in. (cm) | 55-7/8 (149.5) | 55-7/8 (149.5) | 55-7/8 (149.5) |
| Cabinet Depth — in. (cm) | 62-1/2 (158.7) | 62-1/2 (158.7) | 62-1/2 (158.7) |
| Door Opening (diameter) — in. (cm) | 31-3/8 (79.69) | 31-3/8 (79.69) | 31-3/8 (79.69) |
| Door Sill Height — in. (cm) | 33-3/8 (84.77) | 33-3/8 (84.77) | 33-3/8 (84.77) |
| S.A.F.E. Water Connection — in. | 3/4 (11.5 NH) F.N.P.T. (North America) 3/4 B.S.P.T. (Outside North America) | 3/4 (11.5 NH) F.N.P.T. (North America) 3/4 B.S.P.T. (Outside North America) | 3/4 (11.5 NH) F.N.P.T. (North America) 3/4 B.S.P.T. (Outside North America) |
| Dryers per 20' / 40' Container | 3 / 7 | 3 / 7 | 3 / 7 |
| Dryers per 48' / 53' Truck | 8 / 9 | 8 / 9 | 8 / 9 |
| APPROXIMATE WEIGHT | | | |
| Approximate Net Weight — lb (kg) | 2,103 (953.90) | 2,103 (953.90) | 2,259 (1,024.67) |
| Approximate Shipping Weight — lb (kg) | 2,269 (1,029.20) | 2,269 (1,029.20) | 2,425 (1,099.96) |
| Voltage Available | 380-480V 3ø 3,4w 50/60 Hz | 208-575V 3ø 3,4w 50/60 Hz | 208-480V 3ø 3,4w 50/60 Hz |
| Airflow 50 HZ — CFM (CMM) | 3,700 (104.77) | 3,700 (104.77) | 4,400 (124.59) |
| Airflow 60 HZ — CFM (CMM) | 3,700 (104.77) | 3,700 (104.77) | 4,400 (124.59) |
| Heat Input — BTU/hr (kcal/hr) | N/A | 550,000 (138,598) | N/A |
| Gas Inlet Connection Size — in. | N/A | 1-1/2 F.N.P.T. 1-1/2 F.B.S.P.T. (CE and Australia Only) | N/A |
| Exhaust Connection (diameter) — in. (cm) | 18 (45.72) | 18 (45.72) | 20 (50.80) |
| Oven Size | 72 kW / 245,700 BTU / 61,700 Kcal | N/A | N/A |
| | 75.2 kW / 258,000 BTU / 65,000 Kcal | N/A | N/A |
| Steam Consumption — lb/hr (kg/hr) | N/A | N/A | 520 (236) |
| Operating Steam Pressure — psi (bar) | N/A | N/A | 125 (8.6) |
| Compressed Air Connection* — in. | 1/4 Quick Connection | N/A | 1/8 N.P.T. |
| Compressed Air Volume* — cfm (cmh) | 4.25 (0.12) | N/A | 5.00 (0.14) |
| Boiler Horsepower (Normal Load) — Bph | N/A | N/A | 14.5 |
| Supply Connection** — in. | N/A | N/A | (1) 1-1/2 M.N.P.T. |
| Return Connection** — in. | N/A | N/A | (1) 1-1/2 M.N.P.T. |

Important: Dryer requires a clean, dry and regulated 80 psi +/- 10 psi (5.51 bar +/- 0.68 bar) air supply.

*Compressed air is not required with optional steam solenoid valve.

**Optional Steam Coil Connection Differ. Refer to Installation Manual.