

# 200-LB CAPACITY OPL DRYER

AD-202



ADC™ built its reputation over the last 50 years on the AD Series dryer. With a passion for innovation and design, top-to-bottom quality, and the ability to customize your build, the AD Series dryers are a popular choice for on-premises laundries around the world. From hotels to hospitals and nursing homes to health clubs, the AD Series OPL dryers, offer a user-friendly and reliable on-premises laundry system that helps facilities maintain lower overhead and smooth day-to-day operations.

## S.A.F.E.

Sensor Activated Fire Extinguishing system (S.A.F.E.) is a controlled extinguisher that automatically detects fires in the dryer, douses them with water and alerts you that the system has been activated. The SAFE system helps to protect your facility whether the dryer is in operation or in an idle state.

## COMPUTER OPERATED

ADC™ brought computer-operated dryers to the market, and today we continue to be a leader in applying technology to dryer operation.

The AD Series features an accessible design with easy-to-read LCD screens and a user-friendly multilingual interface.

Our advanced technology allows for self-diagnostic controls, which constantly monitor and give you up-to-date details and information on your machine.



### STANDARD FEATURES

- 200-lb capacity
- 61.20 cu. ft. basket volume
- 590,000 BTU/hr heat input, 4,200 cfm airflow
- Radial airflow
- Easy-to-load vertical steel doors
- Self-diagnostic microprocessor with patented auto-drying feature
- Easy access to lint compartment
- Available in gas and steam heat
- Reversing basket
- Four-point roller support and drive system
- Stainless steel basket with

### OPTIONAL FEATURES

- Stainless steel front and cabinet
- F.S.S. (Fire Suppression System)

See [adclaundry.com](http://adclaundry.com) for warranty details.

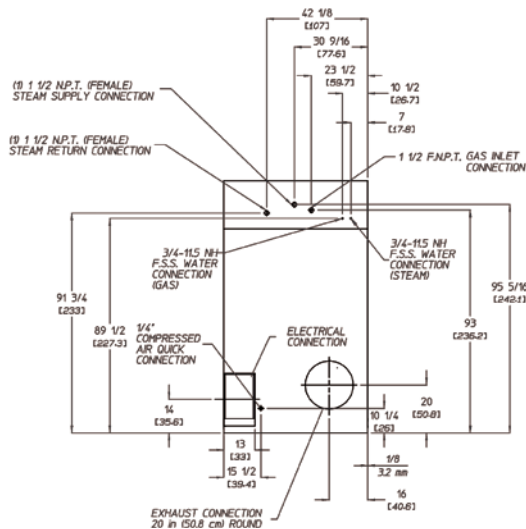
**VISIT [ADCLAUNDRY.COM](http://ADCLAUNDRY.COM) FOR MORE INFORMATION.**

# 200-LB CAPACITY OPL DRYER

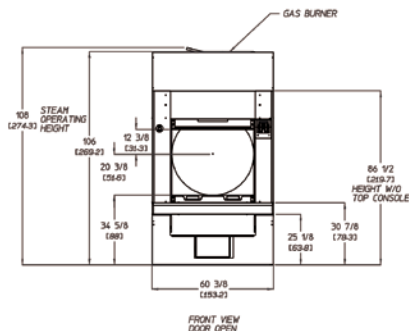
AD-202



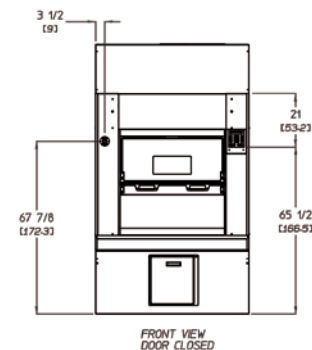
REAR VIEW



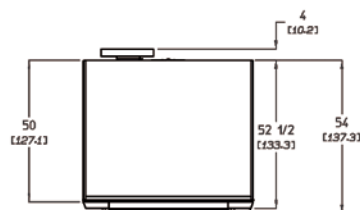
FRONT VIEW –  
DOOR OPEN



FRONT VIEW –  
DOOR CLOSED



PLAN VIEW



AD-202 OPL	GAS	STEAM
<b>CAPACITY</b>		
Maximum Capacity Dry Weight — lbs (kg)	200 (90.72)	200 (90.72)
Tumbler Diameter — in. (cm)	55-5/8 (141.29)	55-5/8 (141.29)
Tumbler Depth — in. (mm)	43-1/2 (110.49)	43-1/2 (110.49)
Tumbler Volume — cu. ft. (L)	61.20 (1,732.99)	61.20 (1,732.99)
Tumbler/Drive Motor — hp (kW)	3 (2.24)	3 (2.24)
Blower/Fan Motor — hp (kW)	7-1/2 (5.59)	7-1/2 (5.59)
<b>DIMENSIONS</b>		
Cabinet Width — in. (cm)	60-3/8 (153.35)	60-3/8 (153.35)
Cabinet Depth — in. (cm)	54 (137.16)	54 (137.16)
Cabinet Height — in. (cm)	106 (269.24)	106 (269.24)
Door Opening (diameter) — in. (cm)	40-3/4 (103.50)	40-3/4 (103.50)
Door Sill Height — in. (cm)	34-5/8 (87.95)	34-5/8 (87.95)
Water Connection — in.	3/4 - 11.5 NH	3/4 - 11.5 NH
Dryers per 20' / 40' Container	3 / 7	3 / 7
Dryers per 48' / 53' Truck	8 / 8	8 / 8
<b>APPROXIMATE WEIGHT</b>		
Approximate Net Weight — lb (kg)	2,100 (952.54)	2,349 (1,065.49)
Approximate Shipping Weight — lb (kg)	2,166 (982.48)	2,515 (1,140.78)
Voltage Available	208-575V 3ø 3,4w 50/60 Hz	208-575V 3ø 3,4w 50/60 Hz
Airflow 50 HZ — CFM (CMM)	4,200 (118.9)	4,400 (124.59)
Airflow 60 HZ — CFM (CMM)	4,200 (118.9)	4,400 (124.59)
Heat Input — BTU/hr (kcal/hr)	590,000 (148,678)	N/A
Gas Inlet Connection Size — in.	1-1/2 F.N.P.T. 1-1/2 F.B.S.P.T. (CE and Australia Only)	N/A
Exhaust Connection (diameter) — in. (cm)	20 (50.80)	20 (50.80)
Oven Size	N/A	N/A
Steam Consumption — lb/hr (kg/hr)	N/A	540 (245)
Operating Steam Pressure — psi (bar)	N/A	125 (8.6)
Compressed Air Connection — in.	1/4 Quick Connection	1/4 Quick Connection
Compressed Air Volume — cfm (cmh)	4.25 (0.12)	4.25 (0.12)
Boiler Horsepower (Normal Load) — Bph	N/A	14.5
Supply Connection* — in.	N/A	(1) 1-1/2 N.P.T. (female)
Return Connection* — in.	N/A	(1) 1-1/2 N.P.T. (female)

\*Refer to installation manual for optional steam connections.