

75-LB CAPACITY OPL DRYER

AD-758V



ADC™ built its reputation over the last 50 years on the AD Series dryer. With a passion for innovation and design, top-to-bottom quality, and the ability to customize your build, the AD Series dryers are a popular choice for on-premises laundries around the world. From hotels to hospitals and nursing homes to health clubs, the AD Series OPL dryers, offer a user-friendly and reliable on-premises laundry system that helps facilities maintain lower overhead and smooth day-to-day operations.

S.A.F.E.

Sensor Activated Fire Extinguishing system (S.A.F.E.) is a controlled extinguisher that automatically detects fires in the dryer, douses them with water and alerts you that the system has been activated. The SAFE system helps to protect your facility whether the dryer is in operation or in an idle state.

COMPUTER OPERATED

ADC™ brought computer-operated dryers to the market, and today we continue to be a leader in applying technology to dryer operation.

The AD Series features an accessible design with easy-to-read LCD screens and a user-friendly multilingual interface.

Our advanced technology allows for self-diagnostic controls, which constantly monitor and give you up-to-date details and information on your machine.



STANDARD FEATURES

- 75-lb capacity
- 21.50 cu. ft. basket volume
- 175,000 BTU/hr heat input, 1,000 cfm airflow
- Radial airflow
- Steel door with gasketless glass
- 8" diameter vent connection
- Easy-to-clean lint drawer
- Available in gas, steam and electric heat

OPTIONAL FEATURES

- Stainless steel front, cabinet & basket
- Reversing basket
- S.A.F.E. (Sensor Activated Fire Extinguishing System)

See adclaundry.com for warranty details.

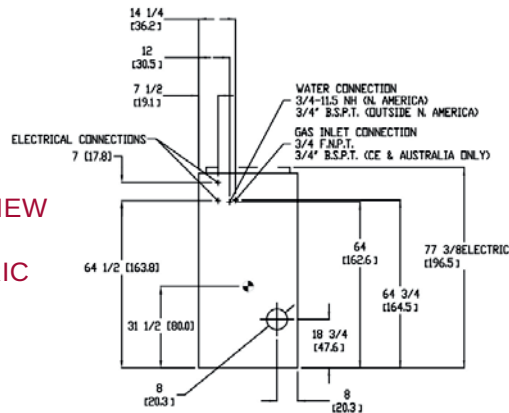
VISIT ADCLAUNDRY.COM FOR MORE INFORMATION.

75-LB CAPACITY OPL DRYER

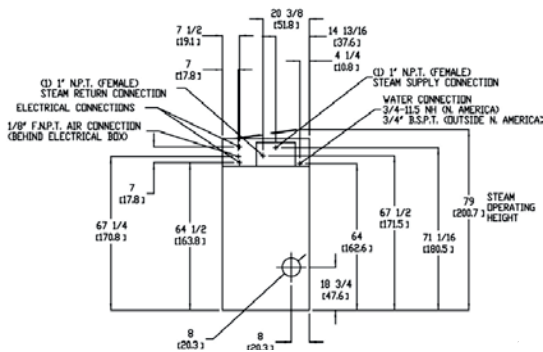
AD-758V



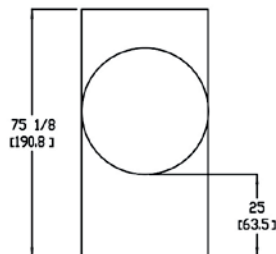
REAR VIEW
GAS &
ELECTRIC



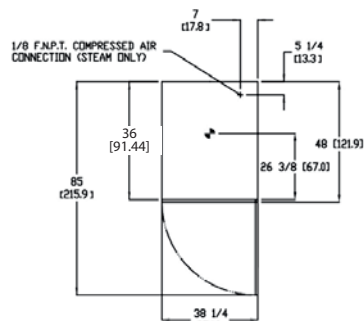
REAR VIEW
STEAM



FRONT
VIEW



PLAN
VIEW



AD-758V OPL	ELECTRIC	GAS	STEAM
CAPACITY			
Maximum Capacity Dry Weight — lbs (kg)	75 (34.02)	75 (34.02)	75 (34.02)
Tumbler Diameter — in. (cm)	36-1/4 (92.08)	36-1/4 (92.08)	36-1/4 (92.08)
Tumbler Depth — in. (mm)	36 (91.44)	36 (91.44)	36 (91.44)
Tumbler Volume — cu. ft. (L)	21.50 (608.81)	21.50 (608.81)	21.50 (608.81)
Tumbler/Drive Motor (non-reversing / reversing) — hp (kW)	1 (0.75) / 1/2 (0.37)*	1 (0.75) / 1/2 (0.37)*	1 (0.75) / 1/2 (0.37)*
Blower/Fan Motor (non-reversing / reversing) — hp (kW)	N/A / 1 (0.37)	N/A / 1 (0.37)	N/A / 1 (0.37)
DIMENSIONS			
Door Opening (diameter) — in. (cm)	31-3/8 (79.69)	31-3/8 (79.69)	31-3/8 (79.69)
Door Sill Height — in. (cm)	28 (71.12)	28 (71.12)	28 (71.12)
S.A.F.E. Water Connection — in.	3/4 - 11.5 NH (North America) 3/4 B.S.P.T. (Outside North America)	3/4 - 11.5 NH (North America) 3/4 B.S.P.T. (Outside North America)	3/4 - 11.5 NH (North America) 3/4 B.S.P.T. (Outside North America)
Dryers per 20' / 40' Container	9 / 20	9 / 20	9 / 20
Dryers per 48' / 53' Truck	24 / 26	24 / 26	24 / 26
APPROXIMATE WEIGHT			
Approximate Net Weight — lb (kg)	721 (327.04)	721 (327.04)	816 (370.13)
Approximate Shipping Weight — lb (kg)	773 (350.63)	773 (350.63)	868 (393.72)
Voltage Available	208-575V 1,3ø 2,3,4w 50 / 60 Hz	120-575V 1,3ø 2,3,4w 50 / 60 Hz	120-575V 1,3ø 2,3,4w 50 / 60 Hz
Airflow 50 HZ — CFM (CMM)	833 (23.60)	833 (23.60)	1,000 (28.32)
Airflow 60 HZ — CFM (CMM)	1,000 (28.32)	1,000 (28.32)	1,200 (33.98)
Heat Input — BTU/hr (kcal/hr)	N/A	175,000 (44,099)	N/A
Gas Inlet Connection Size — in.	N/A	3/4 M.N.P.T. 3/4 B.S.P.T. (CE and Australia Only)	N/A
Exhaust Connection (diameter) — in. (cm)	8 (20.32)	8 (20.32)	8 (20.32)
Oven Size	30 kW / 102,400 BTU / 25,800 Kcal	N/A	N/A
Steam Consumption — lb/hr (kg/hr)	N/A	N/A	275 (124.7)
Operating Steam Pressure — psi (bar)	N/A	N/A	125 (8.6)
Compressed Air Connection** — in.	N/A	N/A	1/8 F.N.P.T.
Compressed Air Volume** — cfm (cmh)	N/A	N/A	0.75 (0.02)
Boiler Horsepower (Normal Load) — Bph	N/A	N/A	7.2
Supply Connection† — in.	N/A	N/A	(1) 1-1/4 N.P.T.
Return Connection† — in.	N/A	N/A	(1) 1 N.P.T.

*Reversing dryers use 3-phase (30) motors.

**Air-operated steam damper system requires a clean, dry, and regulated 80 psi +/- 10 psi (5.51 bar +/- 0.69 bar) air supply.

†Optional steam coil connections differ. Refer to installation manual.