

75-LB CAPACITY OPL DRYER

AD-78



ADC™ built its reputation over the last 50 years on the AD Series dryer. With a passion for innovation and design, top-to-bottom quality, and the ability to customize your build, the AD Series dryers are a popular choice for on-premises laundries around the world. From hotels to hospitals and nursing homes to health clubs, the AD Series OPL dryers, offer a user-friendly and reliable on-premises laundry system that helps facilities maintain lower overhead and smooth day-to-day operations.

S.A.F.E.

Sensor Activated Fire Extinguishing system (S.A.F.E.) is a controlled extinguisher that automatically detects fires in the dryer, douses them with water and alerts you that the system has been activated. The SAFE system helps to protect your facility whether the dryer is in operation or in an idle state.

COMPUTER OPERATED

ADC™ brought computer-operated dryers to the market, and today we continue to be a leader in applying technology to dryer operation.

The AD Series features an accessible design with easy-to-read LCD screens and a user-friendly multilingual interface.

Our advanced technology allows for self-diagnostic controls, which constantly monitor and give you up-to-date details and information on your machine.



STANDARD FEATURES

- 75-lb capacity
- 22.40 cu. ft. basket volume
- 204,000 BTU/hr heat input, 1,200 cfm airflow
- Radial airflow
- Steel door with gasketless glass
- 10" diameter vent connection
- Fits through a standard 36" door
- Extra-wide 44-1/2" diameter drum for excellent air circulation and drying
- Large 31-3/8" door
- Available in gas and electric heat

OPTIONAL FEATURES

- Stainless steel front, cabinet & basket
- Reversing basket
- S.A.F.E. (Sensor Activated Fire Extinguishing System)

See adclaundry.com for warranty details.

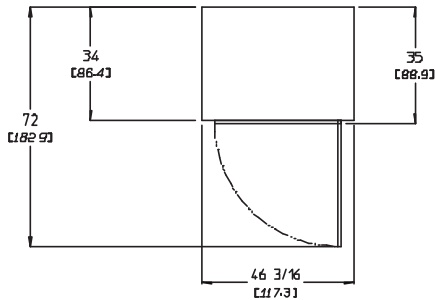
VISIT ADCLAUNDRY.COM FOR MORE INFORMATION.

75-LB CAPACITY OPL DRYER

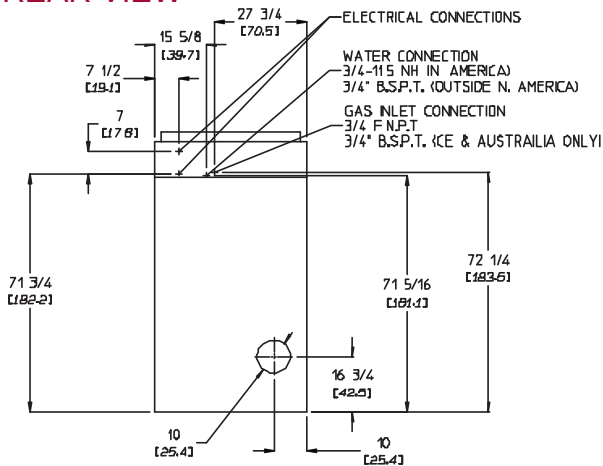
AD-78



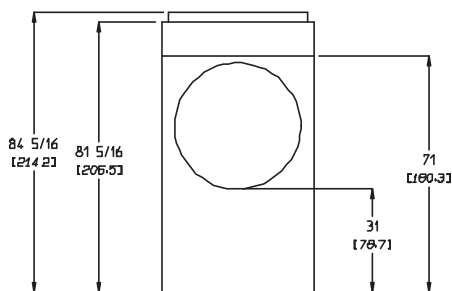
PLAN VIEW



REAR VIEW



FRONT VIEW



AD-78 OPL	ELECTRIC	GAS
CAPACITY		
Maximum Capacity Dry Weight — lbs (kg)	75 (34.02)	75 (34.02)
Tumbler Diameter — in. (cm)	44-1/2 (113.03)	44-1/2 (113.03)
Tumbler Depth — in. (mm)	24-7/8 (63.18)	24-7/8 (63.18)
Tumbler Volume — cu. ft. (L)	22.40 (634.30)	22.40 (634.30)
Tumbler/Drive Motor — hp (kW)	1 (0.75)*	1 (0.75)*
Blower/Fan Motor — hp (kW)	1/2 (0.37)	1/2 (0.37)
DIMENSIONS		
Cabinet Width — in. (cm)	46-3/16 (117.3)	46-3/16 (117.3)
Cabinet Depth — in. (cm)	35 (88.9)	35 (88.9)
Cabinet Height — in. (cm)	84-5/16 (214.2)	84-5/16 (214.2)
Door Opening (diameter) — in. (cm)	31-3/8 (79.69)	31-3/8 (79.69)
Door Sill Height — in. (cm)	31 (78.74)	31 (78.74)
S.A.F.E. Water Connection — in.	3/4 - 11.5 NH (North America) 3/4 B.S.P.T. (Outside North America)	3/4 - 11.5 NH (North America) 3/4 B.S.P.T. (Outside North America)
Dryers per 20' / 40' Container	10 / 20	10 / 20
Dryers per 48' / 53' Truck	25 / 27	25 / 27
APPROXIMATE WEIGHT		
Approximate Net Weight — lb (kg)	888 (409.79)	888 (409.79)
Approximate Shipping Weight — lb (kg)	938 (425.47)	938 (425.47)
Airflow 50 HZ — CFM (CMM)	1,000 (28.31)	625 (17.70)
Airflow 60 HZ — CFM (CMM)	1200 (33.98)	750 (21.24)
Heat Input — BTU/hr (kcal/hr)	N/A	240,000 (51,407)
Gas Inlet Connection Size — in.	N/A	3/4 M.N.P.T. 3/4 B.S.P.T. (CE and Australia Only)
Exhaust Connection (diameter) — in. (cm)	10 (25.40)	10 (25.40)
Oven Size	24 kW / 81,900 BTU / 20,600 Kcal	N/A
	36 kW / 122,800 BTU / 31,000 Kcal	N/A

*For single-phase (1Ø) dryers, use 1 motor: 1 hp drive/fan. For three-phase (3Ø) non-reversing dryers, use 1 motor: 1 hp drive/fan; and for three-phase (3Ø) reversing dryers, use 2 motors: 1 hp fan and 1/2 hp drive.