

# 45-LB x2 CAPACITY OPL STACK DRYER

AD-444



ADC™ built its reputation over the last 50 years on the AD Series dryer. With a passion for innovation and design, top-to-bottom quality, and the ability to customize your build, the AD Series dryers are a popular choice for on-premises laundries around the world. From hotels to hospitals and nursing homes to health clubs, the AD Series OPL dryers, offer a user-friendly and reliable on-premises laundry system that helps facilities maintain lower overhead and smooth day-to-day operations.

## S.A.F.E.

Sensor Activated Fire Extinguishing system (S.A.F.E.) is a controlled extinguisher that automatically detects fires in the dryer, douses them with water and alerts you that the system has been activated. The SAFE system helps to protect your facility whether the dryer is in operation or in an idle state.

## COMPUTER OPERATED

ADC™ brought computer-operated dryers to the market, and today we continue to be a leader in applying technology to dryer operation.

The AD Series features an accessible design with easy-to-read LCD screens and a user-friendly multilingual interface.

Our advanced technology allows for self-diagnostic controls, which constantly monitor and give you up-to-date details and information on your machine.



## STANDARD FEATURES

- 45-lb capacity per pocket
- 14.6 cu. ft. volume per pocket
- 106,000 BTU/hr heat input and 530 cfm per pocket
- Partial axial airflow
- Steel door with gasketless glass
- Two 8" diameter top exhaust connections
- Optional single 10" exhaust connection
- 1/2" gas connection per pocket
- Fits through a standard 36" door
- Available in gas heat
- Available in gray or white front and cabinet

See [adclaundry.com](http://adclaundry.com) for warranty details.

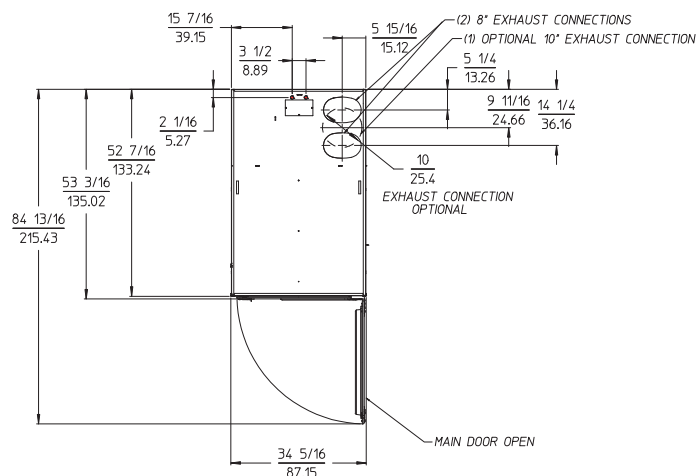
**VISIT [ADCLAUNDRY.COM](http://ADCLAUNDRY.COM) FOR MORE INFORMATION.**

# 45-LB x2 CAPACITY OPL STACK DRYER

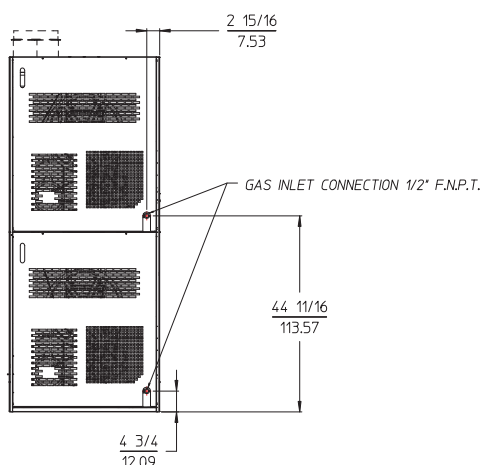
AD-444



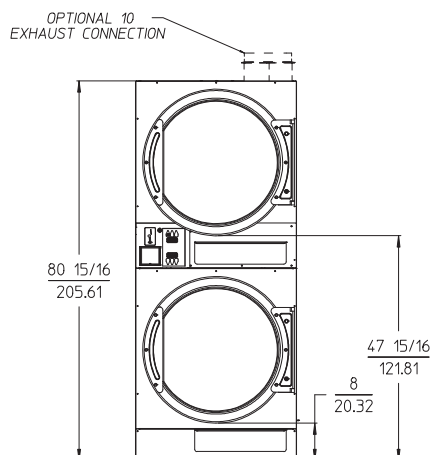
## TOP VIEW



## REAR VIEW



## FRONT VIEW



AD-444 OPL	GAS
<b>CAPACITY</b>	
Maximum Capacity Dry Weight (per pocket) — lbs (kg)	45 (20.41)
Tumbler Diameter — in. (cm)	32-3/4 (83.19)
Tumbler Depth — in. (mm)	30 (76.20)
Tumbler Volume (per pocket) — cu. ft. (L)	14.6 (413.43)
Tumbler/Drive Motor (per pocket) — hp (kW)	3/4 (0.56)
Blower/Fan Motor (per pocket) — hp (kW)	N/A
<b>DIMENSIONS</b>	
Cabinet Width — in. (cm)	34-5/16 (87.15)
Cabinet Depth — in. (cm)	53-3/16 (135.02)
Cabinet Height — in. (cm)	80-15/16 (205.6)
Door Opening (diameter) — in. (cm)	27 (68.58)
Door Sill Height — in. (cm)	Top pocket 50-1/4 (127.64) Bottom pocket 10-1/4 (26.04)
Dryers per 20' / 40' Container	8 / 16
Dryers per 48' / 53' Truck	25 / 27
<b>APPROXIMATE WEIGHT</b>	
Approximate Net Weight — lb (kg)	905 (410.5)
Approximate Shipping Weight — lb (kg)	940 (426.4)
Voltage Available	120-420V 1Ø 2w 50 / 60 Hz
Airflow 50 HZ — CFM (CMM)	442 (12.52)
Airflow 60 HZ — CFM (CMM)	530 (15)
Heat Input — BTU/hr (kcal/hr)	106,000 (26,712)
Gas Inlet Connection Size — in.	1/2" F.N.P.T.
Exhaust Connection (diameter) — in. (cm)	(2) 8 (20.32) (1) 10 (25.4)