

45-LB CAPACITY OPL STACK DRYER

AD-45x2R



ADC™ built its reputation over the last 50 years on the AD Series dryer. With a passion for innovation and design, top-to-bottom quality, and the ability to customize your build, the AD Series dryers are a popular choice for on-premises laundries around the world. From hotels to hospitals and nursing homes to health clubs, the AD Series OPL dryers, offer a user-friendly and reliable on-premises laundry system that helps facilities maintain lower overhead and smooth day-to-day operations.

S.A.F.E.

Sensor Activated Fire Extinguishing system (S.A.F.E.) is a controlled extinguisher that automatically detects fires in the dryer, douses them with water and alerts you that the system has been activated. The SAFE system helps to protect your facility whether the dryer is in operation or in an idle state.

COMPUTER OPERATED

ADC™ brought computer-operated dryers to the market, and today we continue to be a leader in applying technology to dryer operation.

The AD Series features an accessible design with easy-to-read LCD screens and a user-friendly multilingual interface.

Our advanced technology allows for self-diagnostic controls, which constantly monitor and give you up-to-date details and information on your machine.



STANDARD FEATURES

- 45-lb capacity per pocket
- Single-phase reversing
- 14.6 cu. ft. volume per pocket
- 94,000 BTU/hr heat input and 525 cfm per pocket
- Trans-axial airflow
- Two individual micro-controls
- Steel door with gasketless glass
- Two independently controlled pockets
- Available in gas heat
- Available in white front and cabinet
- Two-point roller support with center rear bearing system

OPTIONAL FEATURES

- Stainless steel front, cabinet & basket
- S.A.F.E. (Sensor Activated Fire Extinguishing System) on Phase 7 machines
- Stainless steel basket

See adclaundry.com for warranty details.

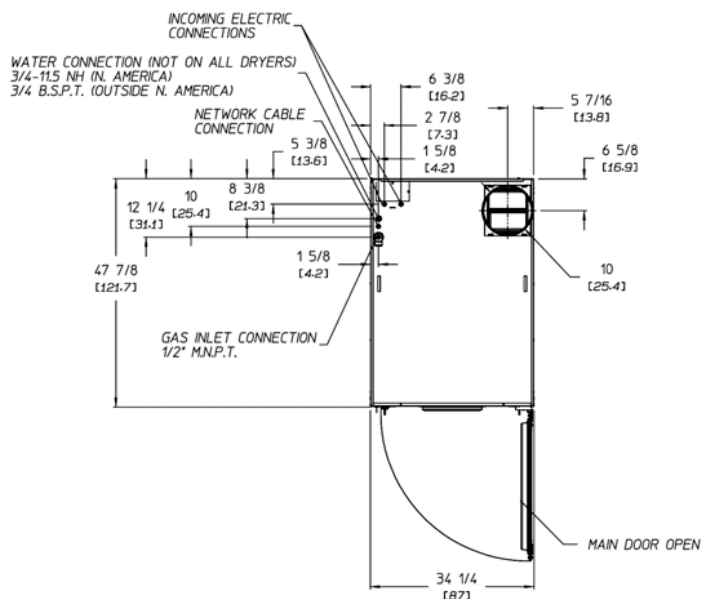
VISIT ADCLAUNDRY.COM FOR MORE INFORMATION.

45-LB CAPACITY OPL STACK DRYER

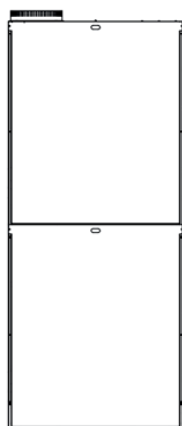
AD-45x2R



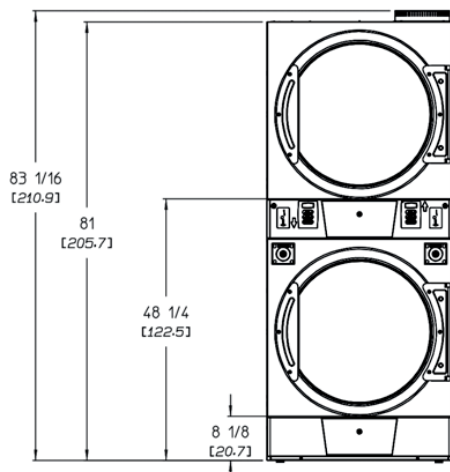
TOP VIEW



REAR VIEW



FRONT VIEW



AD-45x2R OPL	GAS
CAPACITY	
Maximum Capacity Dry Weight (per pocket) — lbs (kg)	45 (20.4)
Tumbler Diameter — in. (cm)	32-3/4 (83.2)
Tumbler Depth — in. (mm)	30 (76.2)
Tumbler Volume (per pocket) — cu. ft. (L)	14.6 (413.4)
Tumbler/Drive Motor (per pocket) — hp (kW)	1/3 (0.25)
Blower/Fan Motor (per pocket) — hp (kW)	1/2 (0.37)
DIMENSIONS	
Cabinet Width — in. (cm)	34-1/4 (87)
Cabinet Depth — in. (cm)	47-7/8 (121.6)
Cabinet Height — in. (cm)	81 (205.7)
Door Opening (diameter) — in. (cm)	27 (68.6)
Door Sill Height — in. (cm)	50.4 (128) Top pocket 10.3 (26.2) Bottom pocket
Dryers per 20' / 40' Container	10 / 21
Dryers per 48' / 53' Truck	25 / 28
APPROXIMATE WEIGHT	
Approximate Net Weight — lb (kg)	640 (290)
Approximate Shipping Weight — lb (kg)	700 (318)
Voltage Available	120-240V 1Ø 2w 50 / 60 Hz
Airflow 60 HZ — CFM (CMM)	525 (14.9)
Heat Input — BTU/hr (kcal/hr)	94,000 (23,688)
Gas Inlet Connection Size — in.	1/2 M.N.P.T.
Exhaust Connection (diameter) — in. (cm)	10 (25.4)