

# 200-LB CAPACITY INDUSTRIAL DRYER

AD-210



ADC's industrial dryers are built upon the principle of large capacity and swift production at an affordable price. With full capacity tumblers and various door and tilt configurations, you are assured the ability to dry fast and efficiently without the large price tag. We offer a unique design for demanding applications.

## ERGONOMICALLY DESIGNED

The ergonomically designed industrial-sized AD-210 is available in one- and two-way door/tilt configurations for easy loading and unloading. With convenient front panel access to all major electrical and pneumatic components, it's also easy to maintain.

## STAINLESS STEEL BASKET AS STANDARD

ADC uses a 14-gauge stainless steel basket supported on machine tumbler rings for durability and smooth tumbler rotation.

## COMPUTER CONTROLLED

The ADC computer combines 24-volt controls and preprogrammed cycles for electronic reliability and one-touch drying. Press any of the preprogrammed keys for either a timed or automatic cycle. The automatic cycles will dry the load to a specified moisture level.



### STANDARD FEATURES

- Self-Cleaning Blower
- 14-Gauge Stainless Steel Basket
- 11" Diameter Drive Wheels (AD-410, AD-310, AD-210)
- Computer Controlled
- Lint Drawer
- Heavy-Duty Gear Box
- Door/Tilt Configurations (AD-410, AD-310, AD-210)

### OPTIONAL FEATURES

- Gas Heated Models
- Steam Heated Models with ADC Steam Damper System

See [adclaundry.com](http://adclaundry.com) for warranty details.

**VISIT [ADCLAUNDRY.COM](http://ADCLAUNDRY.COM) FOR MORE INFORMATION.**

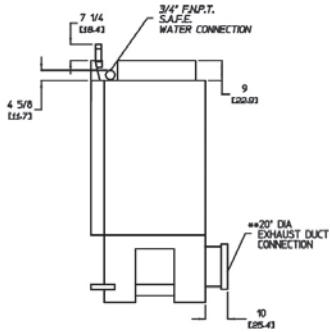
# 200-LB CAPACITY INDUSTRIAL DRYER

AD-210

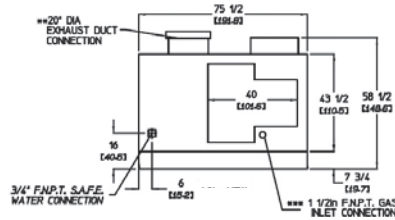


## AD-210 NON-TILT GAS MODEL

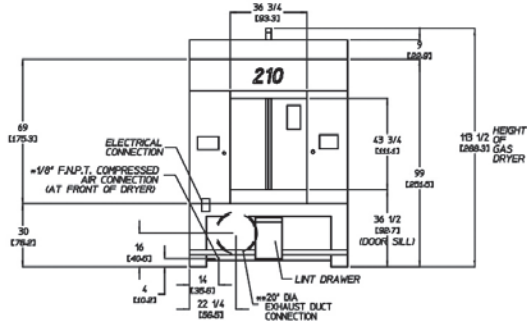
### SIDE VIEW



### TOP VIEW

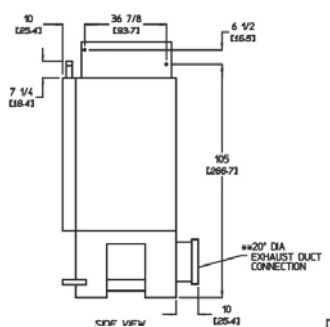


### FRONT VIEW

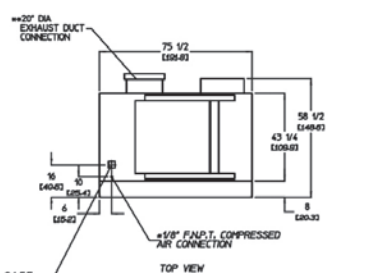


## AD-210 NON-TILT STEAM MODEL

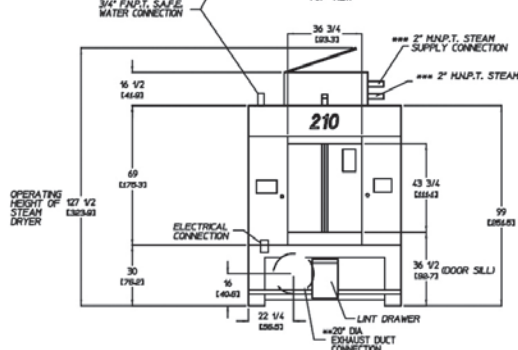
### SIDE VIEW



### TOP VIEW



### FRONT VIEW



AD-210 INDUSTRIAL NON-TILT	GAS	STEAM
CAPACITY		
Maximum Capacity Dry Weight — lbs (kg)	200 (90.72)	200 (90.72)
Tumbler Diameter — in. (cm)	62-1/2 (158.75)	62-1/2 (158.75)
Tumbler Depth — in. (mm)	42 (106.7)	42 (106.7)
Tumbler Volume — cu. ft. (L)	74.5 (2,109.60)	74.5 (2,109.60)
Tumbler/Drive Motor — hp (kW)	3 (2.24)	3 (2.24)
DIMENSIONS		
Door Opening (width x height)* — in. (cm)	36-3/4 x 43 (93.3 x 109.2)	36-3/4 x 43 (93.3 x 109.2)
Door Sill Height Level — in. (cm)	36-1/2 (94.6)	36-1/2 (94.6)
Compressed Air Volume — cfm (cmh)	3.25 (0.25)	3.25 (0.25)
Compressed Air Connection** — in.	1/8 F.N.P.T.	1/8 F.N.P.T.
Exhaust Connection (diameter) — in.	20 (50.8)	20 (50.8)
Water Connection*** — in.	3/4 F.N.P.T.	3/4 F.N.P.T.
APPROXIMATE WEIGHT		
Approximate Net Weight — lb (kg)	3,033 (1,376)	3,275 (1,486)
Approximate Shipping Weight — lb (kg)	3,195 (1,449)	3,437 (1,559)
Voltage Available	208-575V 3ø 3.4w 50 / 60 Hz	208-575V 3ø 3.4w 50 / 60 Hz
Blower / Fan Motor — hp (kW)	7-1/2 (5.6) rear exhaust 15 (11.2) side exhaust	15 (11.2)
Airflow 50 HZ — CFM (CMM)	5,300 (150.08)	5,417 (153.38)
Airflow 60 HZ — CFM (CMM)	5,300 (150.08)	6,500 (184.06)
Heat Input — BTU/hr (kcal/hr)	650,000 (163,810)	N/A
Gas Inlet Connection Size — in.	1-1/2 F.N.P.T.	N/A
Steam Consumption — lb/hr (kg/hr)	N/A	890 (404.5)
Operating Steam Pressure — psi (bar)	N/A	125 (8.6)
Boiler Horsepower (Normal Load) — Bph	N/A	27
Supply Connection — in.	N/A	2 M.N.P.T.
Return Connection — in.	N/A	2 M.N.P.T.

\*Height is 43-inches (109.22 cm) maximum at the center of the door.

\*\*Dryer must be provided with clean, dry and regulated 80 psi +/- 10 psi (5.51 bar +/- 0.69 bar) air supply.

\*\*\*Water supply must be 40 psi +/- 20 psi (2.75 bar +/- 1.37 bar) for fire suppression system to operate properly.

# 200-LB CAPACITY INDUSTRIAL DRYER

AD-210



SEE DIMENSION  
DRAWINGS ON NEXT PAGE

AD-210 INDUSTRIAL 2-WAY TILT	GAS	STEAM
CAPACITY		
Maximum Capacity Dry Weight — lbs (kg)	200 (90.72)	200 (90.72)
Tumbler Diameter — in. (cm)	62-1/2 (158.75)	62-1/2 (158.75)
Tumbler Depth — in. (mm)	42 (106.7)	42 (106.7)
Tumbler Volume — cu. ft. (L)	74.5 (2,109.60)	74.5 (2,109.60)
Tumbler/Drive Motor — hp (kW)	3 (2.24)	3 (2.24)
DIMENSIONS		
Door Opening (width x height)* — in. (cm)	36-3/4 x 43 (93.3 x 109.2)	36-3/4 x 43 (93.3 x 109.2)
Door Sill Height Level — in. (cm)	37-1/4 (94.6)	37-1/4 (94.6)
Compressed Air Volume — cfm (cmh)	9 (0.25)	9 (0.25)
Compressed Air Connection** — in.	3/8 F.N.P.T.	3/8 F.N.P.T.
Exhaust Connection (diameter) — in.	20 (50.8)	20 (50.8)
Water Connection*** — in.	3/4 F.N.P.T.	3/4 F.N.P.T.
APPROXIMATE WEIGHT		
Approximate Net Weight — lb (kg)	3,370 (1,529)	3,625 (1,644)
Approximate Shipping Weight — lb (kg)	3,670 (1,664)	3,925 (1,780)
Voltage Available	208-575V 3ø 3,4w 50 / 60 Hz	208-575V 3ø 3,4w 50 / 60 Hz
Blower / Fan Motor — hp (kW)	7-1/2 (5.6) rear exhaust 15 (11.2) side exhaust	15 (11.2)
Airflow 50 HZ — CFM (CMM)	5,300 (150.08)	5,417 (153.38)
Airflow 60 HZ — CFM (CMM)	5,300 (150.08)	6,500 (184.06)
Heat Input — BTU/hr (kcal/hr)	650,000 (163,810)	N/A
Gas Inlet Connection Size — in.	1-1/2 F.N.P.T.	N/A
Steam Consumption — lb/hr (kg/hr)	N/A	890 (404.5)
Operating Steam Pressure — psi (bar)	N/A	125 (8.6)
Boiler Horsepower (Normal Load) — Bph	N/A	27
Supply Connection — in.	N/A	1-1/2 M.N.P.T.
Return Connection — in.	N/A	3/4 M.N.P.T.

\* Height is 43-inches (109.22 cm) maximum at the center of the door.

\*\* Dryer must be provided with clean, dry and regulated 80 psi +/- 10 psi (5.51 bar +/- 0.69 bar) air supply.

\*\*\* Water supply must be 40 psi +/- 20 psi (2.75 bar +/- 1.37 bar) for fire suppression system to operate properly.

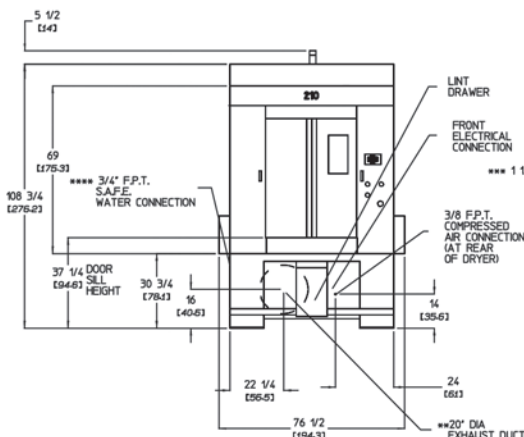
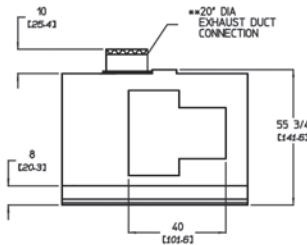
# 200-LB CAPACITY INDUSTRIAL DRYER

AD-210

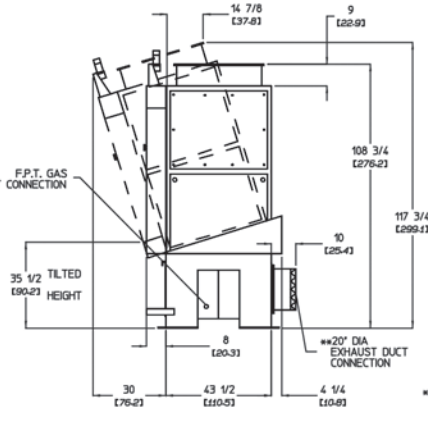


## AD-210 1 DOOR/2-WAY TILT GAS MODEL

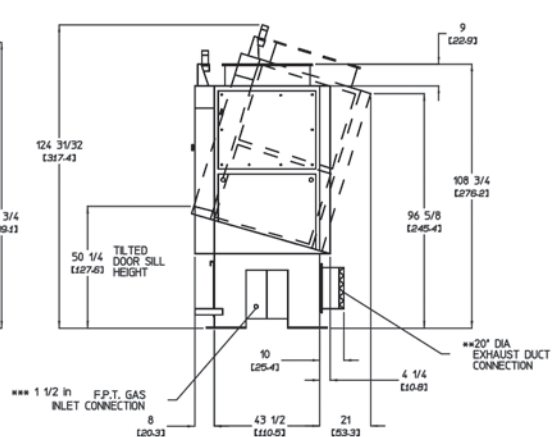
TOP VIEW



FRONT VIEW



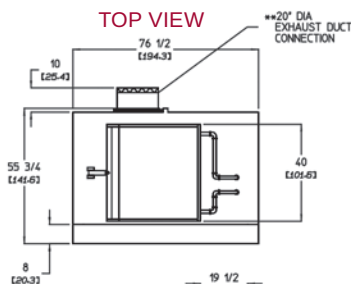
SIDE VIEW TILTED FORWARD



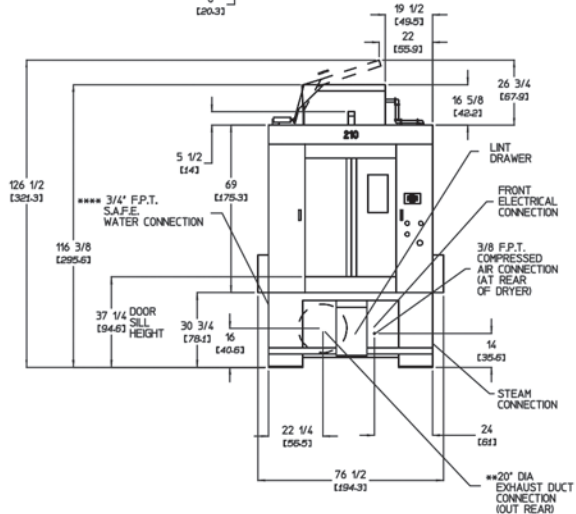
SIDE VIEW TILTED BACK

## AD-210 1 DOOR/2-WAY TILT STEAM MODEL

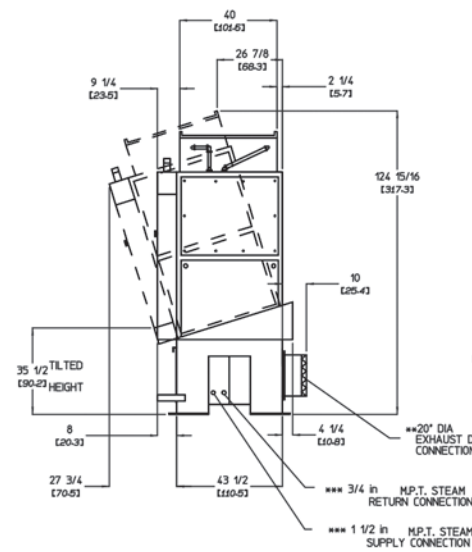
TOP VIEW



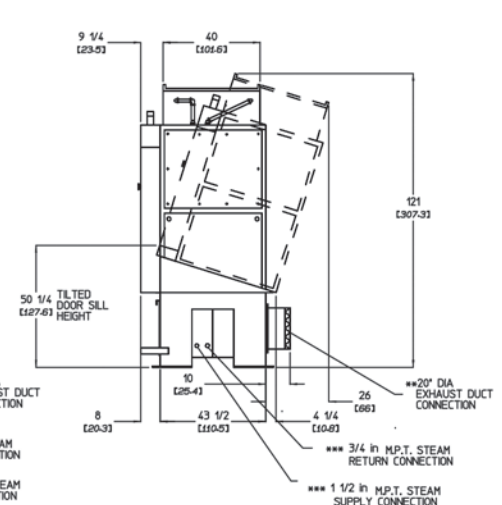
\* BOTH GAS AND STEAM UNITS MUST BE SUPPLIED WITH CLEAN, DRY, REGULATED AIR AT 80 PSI ± 10 PSI (5.52 BAR ± .69 BAR).  
 \*\* DUCTWORK SIZE VARIES WITH INSTALLATION CONDITIONS. EXHAUST STATIC PRESSURE SHOULD NOT EXCEED 0.3" WATER COLUMN (0.74 IN).  
 \*\*\* SIZE OF PIPING TO DRYER VARIES WITH INSTALLATION CONDITIONS. CONTACT FACTORY FOR ASSISTANCE.



FRONT VIEW



SIDE VIEW TILTED FORWARD



SIDE VIEW TILTED BACK

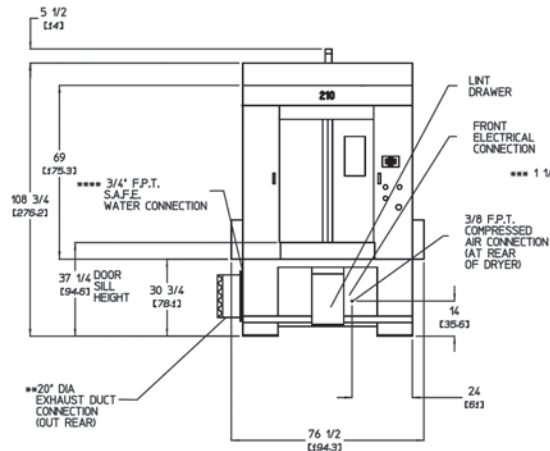
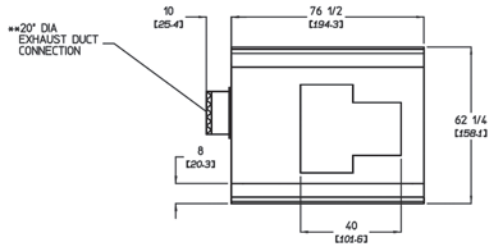
# 200-LB CAPACITY INDUSTRIAL DRYER

AD-210

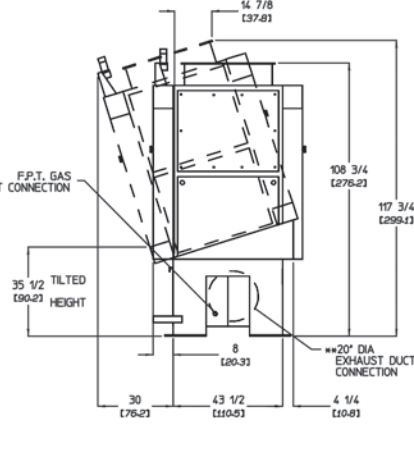


## AD-210 2 DOOR/2-WAY TILT GAS MODEL

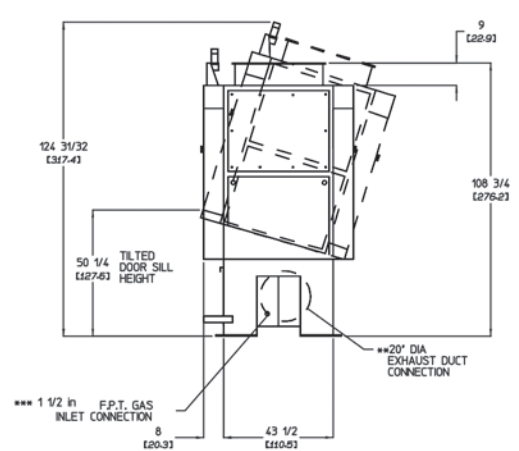
TOP VIEW



FRONT VIEW



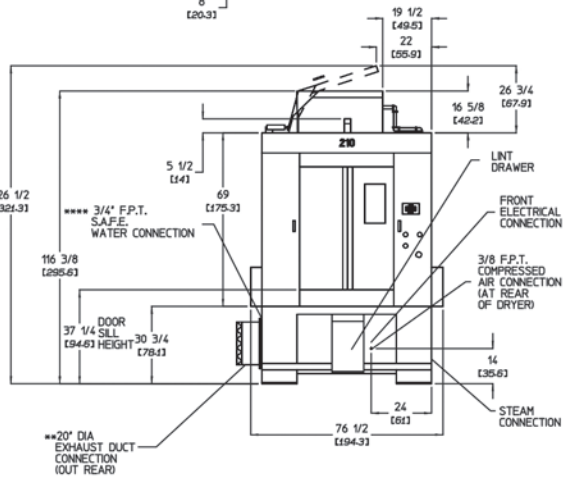
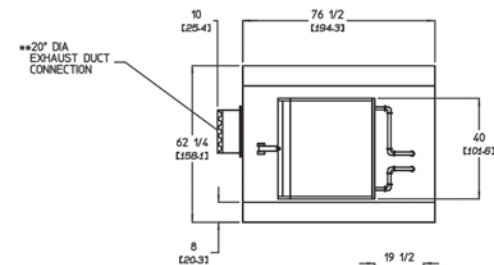
SIDE VIEW TILTED FORWARD



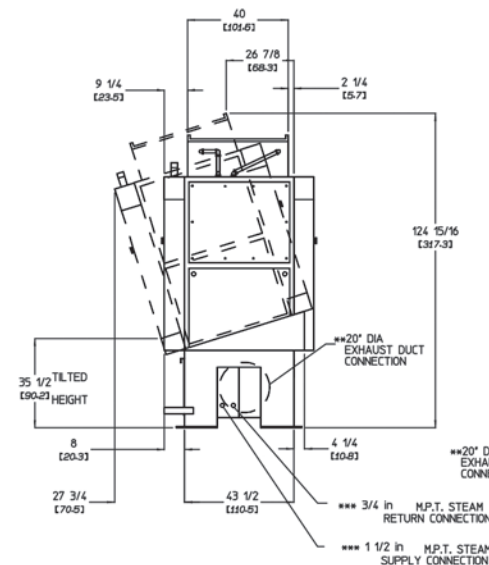
SIDE VIEW TILTED BACK

## AD-210 2 DOOR/2-WAY TILT STEAM MODEL

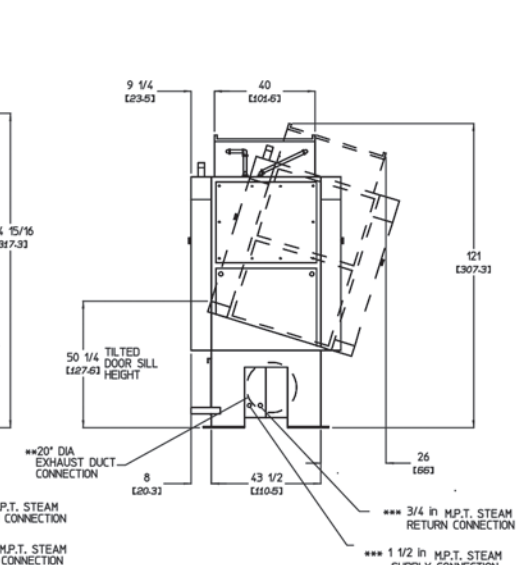
TOP VIEW



FRONT VIEW



SIDE VIEW TILTED FORWARD



SIDE VIEW TILTED BACK