

310-LB CAPACITY INDUSTRIAL DRYER

AD-310



ADC's industrial dryers are built upon the principle of large capacity and swift production at an affordable price. With full capacity tumblers and various door and tilt configurations, you are assured the ability to dry fast and efficiently without the large price tag. We offer a unique design for demanding applications.

ERGONOMICALLY DESIGNED

The ergonomically designed industrial-sized AD-310 is available in one- and two-way door/tilt configurations for easy loading and unloading. With convenient front panel access to all major electrical and pneumatic components, it's also easy to maintain.

STAINLESS STEEL BASKET AS STANDARD

ADC uses a 14-gauge stainless steel basket supported on machine tumbler rings for durability and smooth tumbler rotation.

COMPUTER CONTROLLED

The ADC computer combines 24-volt controls and preprogrammed cycles for electronic reliability and one-touch drying. Press any of the preprogrammed keys for either a timed or automatic cycle. The automatic cycles will dry the load to a specified moisture level.



STANDARD FEATURES

- Self-Cleaning Blower
- 14-Gauge Stainless Steel Basket
- 11" Diameter Drive Wheels (AD-410, AD-310, AD-210)
- Computer Controlled
- Lint Drawer
- Heavy-Duty Gear Box
- Door/Tilt Configurations (AD-410, AD-310, AD-210)

OPTIONAL FEATURES

- Gas Heated Models
- Steam Heated Models with ADC Steam Damper System

See adclaundry.com for warranty details.

VISIT ADCLAUNDRY.COM FOR MORE INFORMATION.

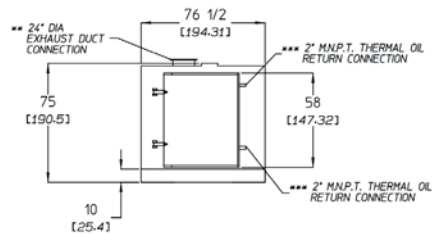
310-LB CAPACITY INDUSTRIAL DRYER

AD-310

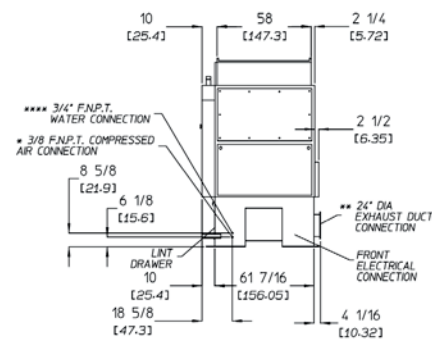


AD-310 NON-TILT THERMAL OIL WITH DAMPER

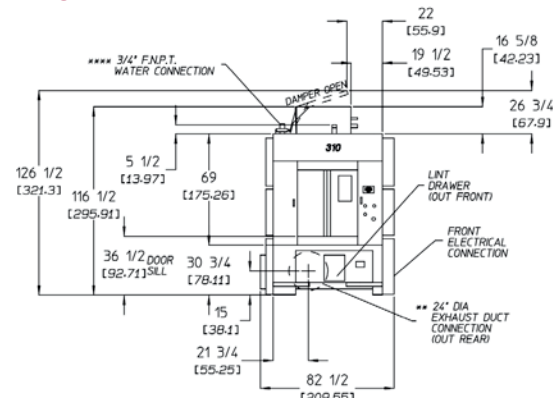
TOP VIEW



RIGHT SIDE VIEW



FRONT VIEW



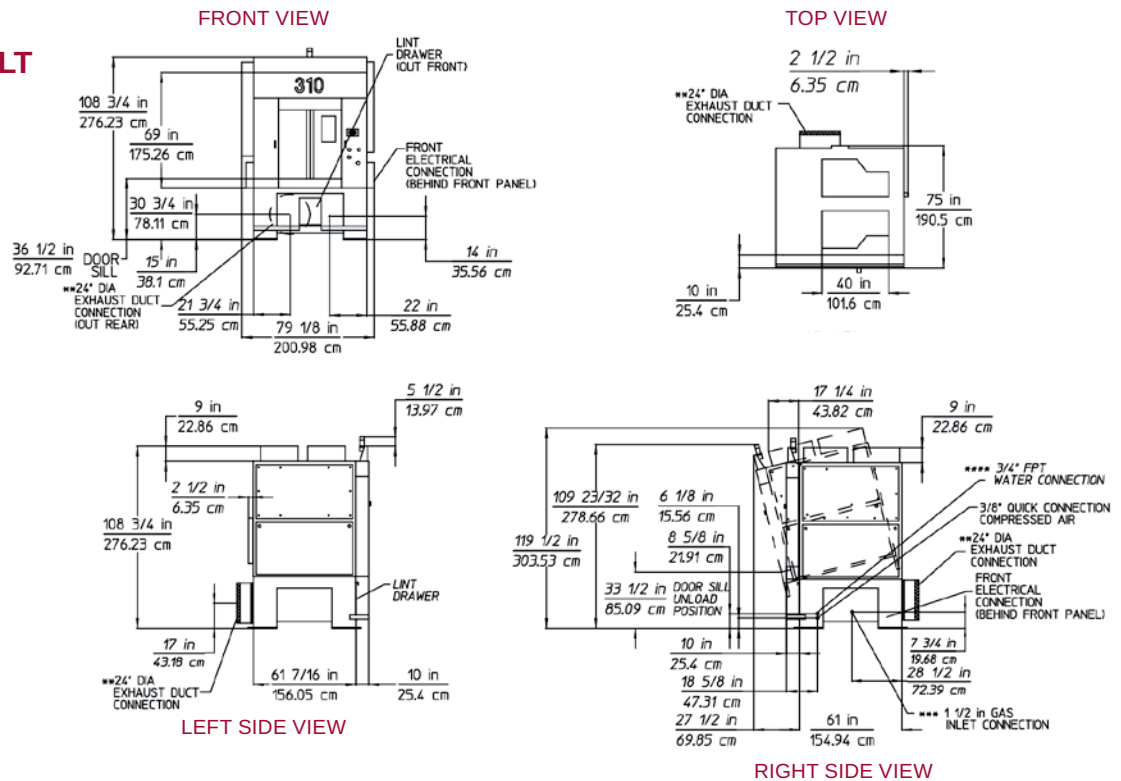
| AD-310 INDUSTRIAL | GAS | STEAM |
|--|--|---|
| CAPACITY | | |
| Maximum Capacity Dry Weight — lbs (kg) | 310 (140.61) | 310 (140.61) |
| Minimum Load Size — lbs (kg) | 205 (92.99) | 205 (92.99) |
| Tumbler Diameter — in. (cm) | 62-1/2 (158.75) | 62-1/2 (158.75) |
| Tumbler Depth — in. (mm) | 60 (152.40) | 60 (152.40) |
| Tumbler Volume — cu. ft. (L) | 106.50 (3,015.744) | 106.50 (3,015.744) |
| Tumbler/Drive Motor — hp (kW) | 5 (3.73) | 5 (3.73) |
| DIMENSIONS | | |
| Cabinet Width — in. (cm) | 82-1/2 (209.55) | 82-1/2 (209.55) |
| Cabinet Operating Depth, Level — in. (cm) | 72-3/4 (184.79) 1 door 78 (198.12) 2 door | 72-3/4 (184.79) 1 door 78 (198.12) 2 door |
| Cabinet Rear-Tilt Height — in. (cm) | 122-7/16 (310.99) | 127-1/2 (323.85) |
| Cabinet Operating Height, Level — in. (cm) | 114-1/4 (290.20) | 126-1/2 (321.31) |
| Cabinet Full-Tilt Depth — in. (cm) | 116-7/16 (295.75) | 113-7/8 (288.13) |
| Rear-Tilt — deg | 15 | 15 |
| Front-Tilt — deg | 15 | 15 |
| Door Opening (width x height)* — in. (cm) | 36-3/4 x 43 (93.3 x 109.2) | 36-3/4 x 43 (93.3 x 109.2) |
| Door Sill Height, Level — in. (cm) | 36-1/2 (92.71) | 36-1/2 (92.71) |
| Door Sill Height, Rear-tilt — in. (cm) | 53 (134.62) | 53 (134.62) |
| Door Sill Height, Front-tilt — in. (cm) | 33-1/2 (85.09) | 33-1/2 (85.09) |
| Compressed Air Volume (1-way/2-way tilt) — cfm (cmh) | 11 (0.31) / 11 (0.31) | 11 (0.31) / 11 (0.31) |
| Compressed Air Connection (non-tilt/tilt) — in. | 3/8 F.N.P.T. / 3/8 Quick Connection | 3/8 F.N.P.T. / 3/8 Quick Connection |
| Exhaust Connection (diameter) — in. | 24 (60.96) | 24 (60.96) |
| Water Connection — in. | 3/4 F.N.P.T. | 3/4 F.N.P.T. |
| APPROXIMATE WEIGHT | | |
| Approximate Net Weight — lb (kg) | 5,000 (2,267.96) | 5,425 (2,460.74) |
| Approximate Shipping Weight — lb (kg) | 5,310 (2,408.58) | 5,735 (2,601.35) |
| Voltage Available | 208-575V 3ø 3,4w 50 / 60 Hz | 208-575V 3ø 3,4w 50 / 60 Hz |
| Blower / Fan Motor — hp (kW) | 15 (11.19) rear exhaust 25 (18.64) side exhaust | 25 (18.64) |
| Airflow — CFM (CMM) | 6,500 (184.06) | 8,500 (240.69) |
| Burner Type | On / Off | N/A |
| Heat Input — BTU/hr (kcal/hr) | 1,125,000 (283,495) | N/A |
| Gas Inlet Connection Size (non-tilt / tilt) — in. | (2) 1-1/2 M.N.P.T. / 1-1/2 M.N.P.T. | N/A |
| Steam Consumption — lb/hr (kg/hr) | N/A | 1,153 (522.99) |
| Maximum Exhaust Back Pressure — WC (mb) | N/A | 0.3 (0.75) |
| Boiler Horsepower (Normal Load) — Bph | N/A | 35 |
| Supply Connection — in. | N/A | 2 M.N.P.T. |
| Return Connection (non-tilt/tilt) — in. | N/A | 2 M.N.P.T. / 1-1/4 M.N.P.T. |

310-LB CAPACITY INDUSTRIAL DRYER

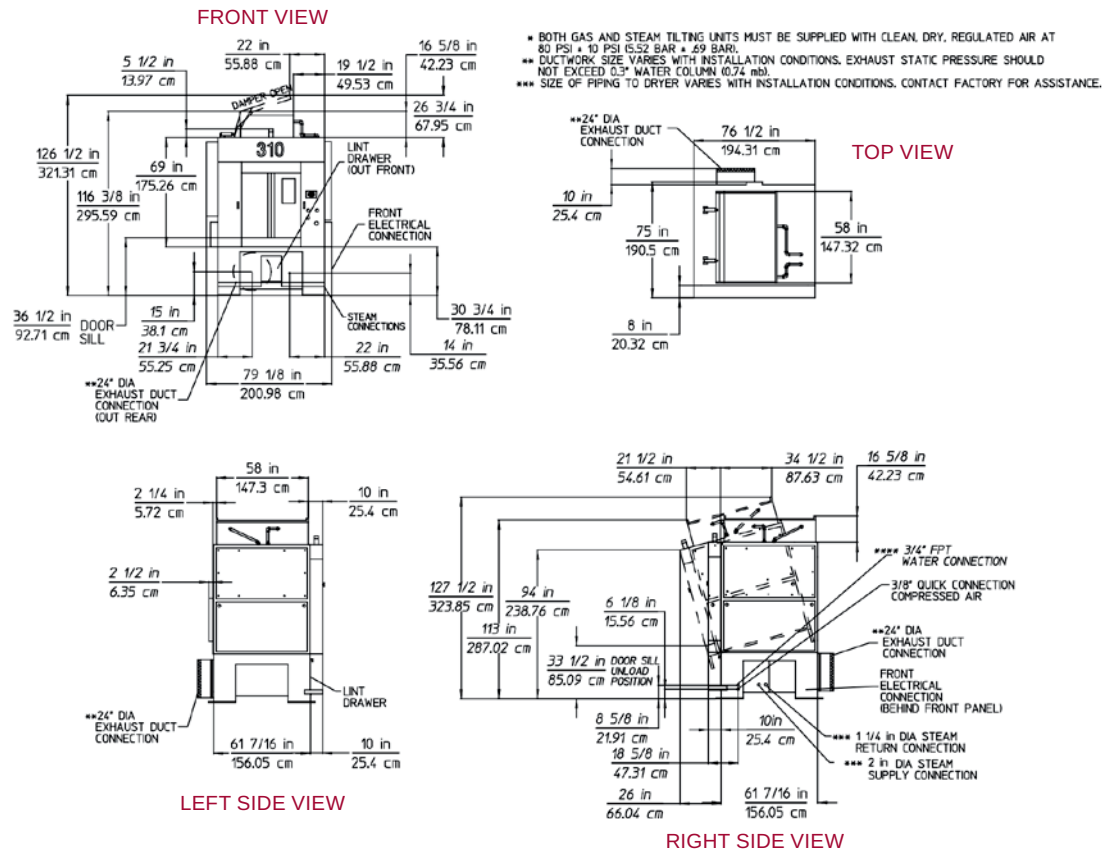
AD-310



AD-310 TILTING* 1-DOOR/FORWARD-TILT GAS MODEL



AD-310 TILTING* 1-DOOR/FORWARD-TILT STEAM MODEL

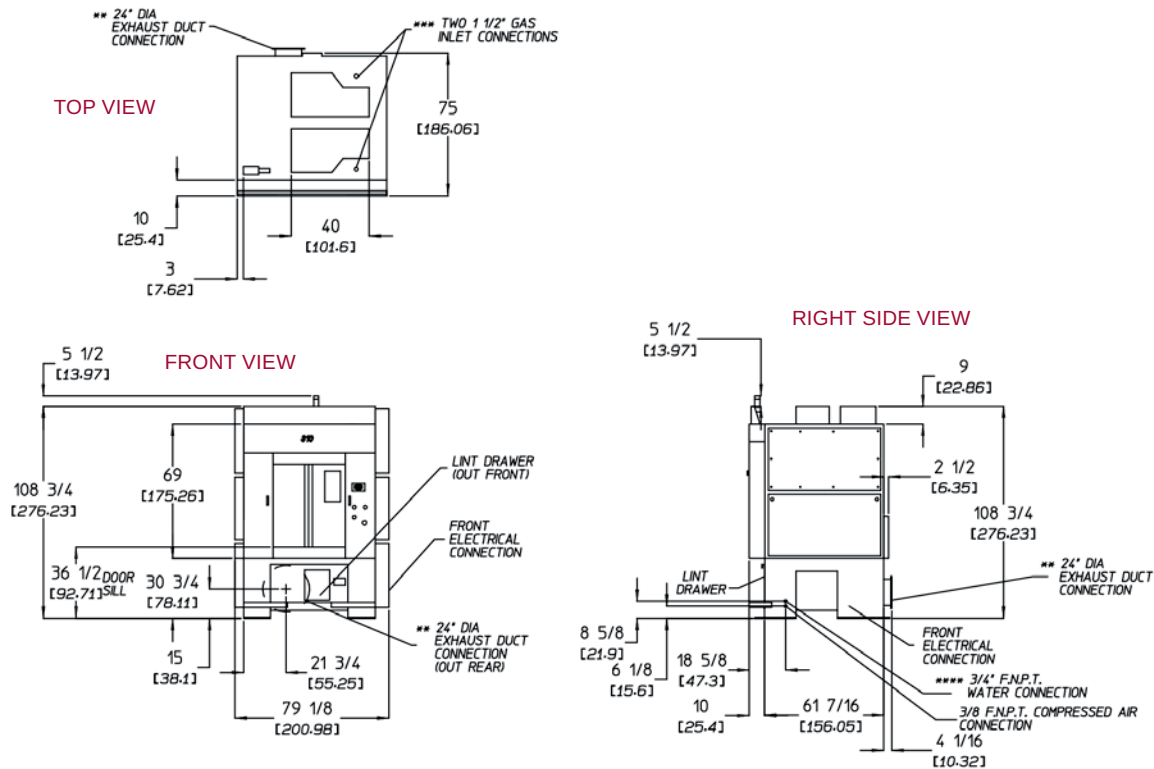


310-LB CAPACITY INDUSTRIAL DRYER

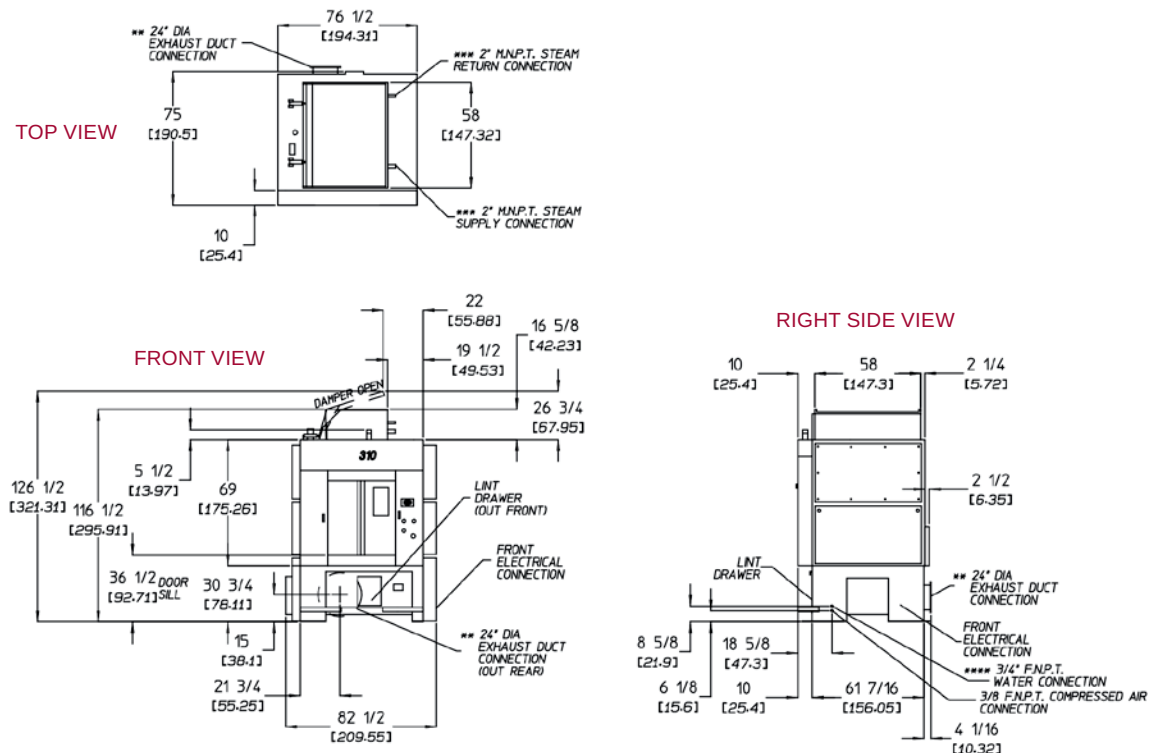
AD-310



AD-310* NON-TILT GAS MODEL



AD-310* NON-TILT STEAM MODEL

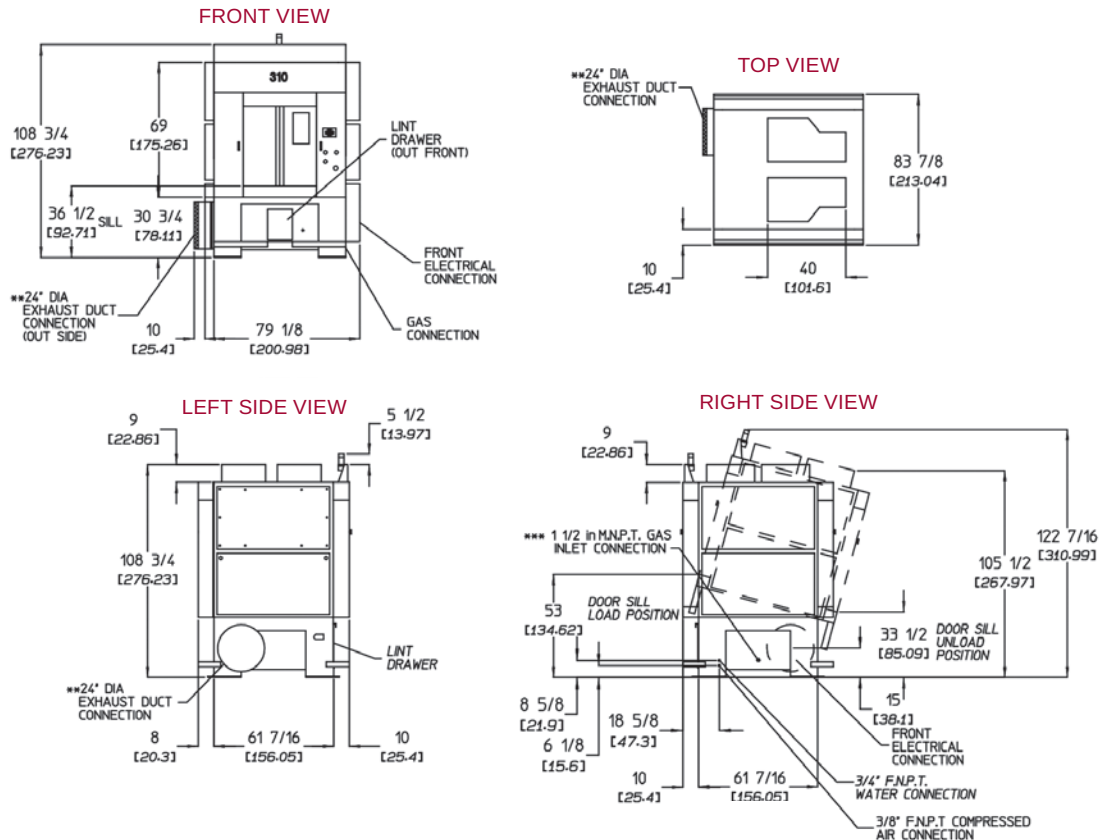


310-LB CAPACITY INDUSTRIAL DRYER

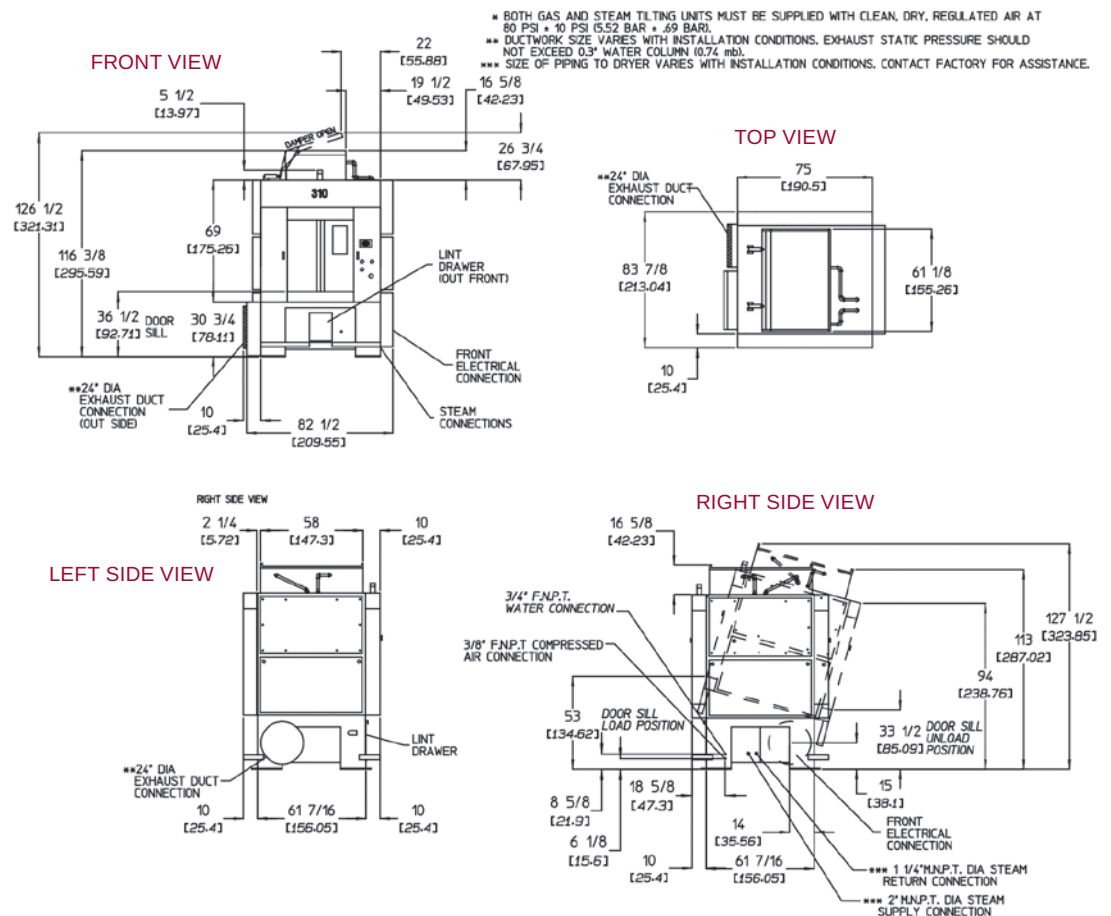


AD-310

AD-310 TILTING* 2-DOOR/REAR-TILT GAS MODEL



AD-310 TILTING* 2-DOOR/REAR-TILT STEAM MODEL

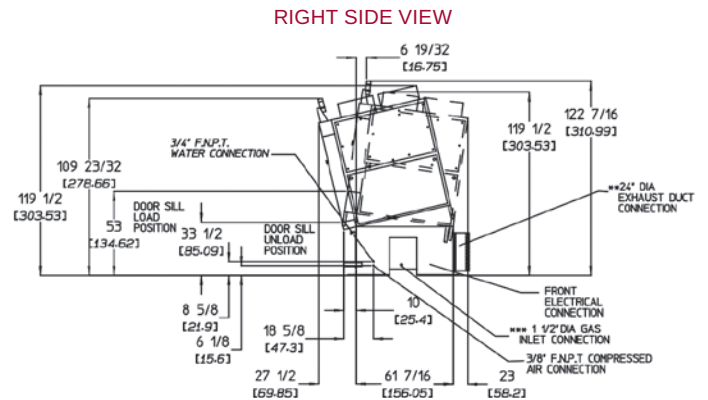
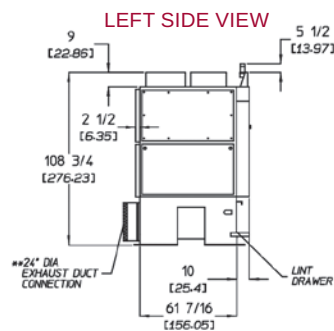
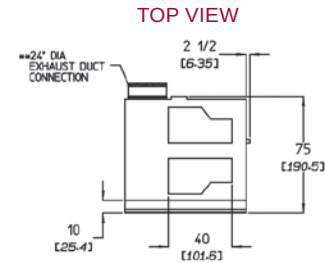
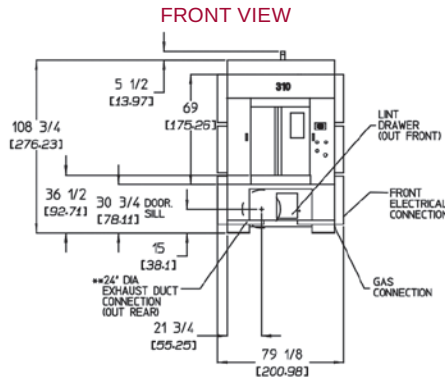


310-LB CAPACITY INDUSTRIAL DRYER

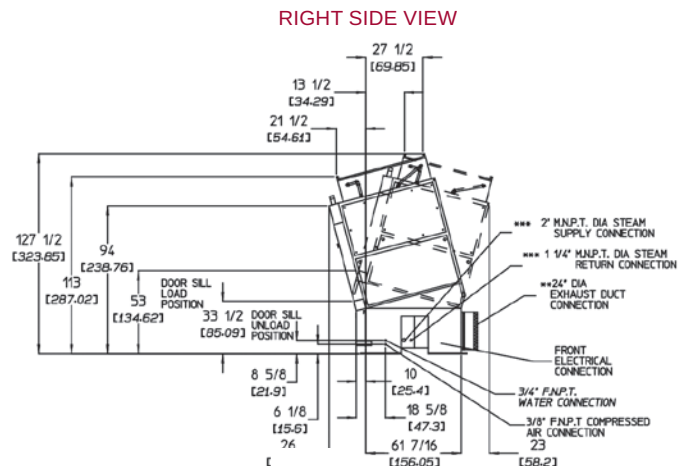
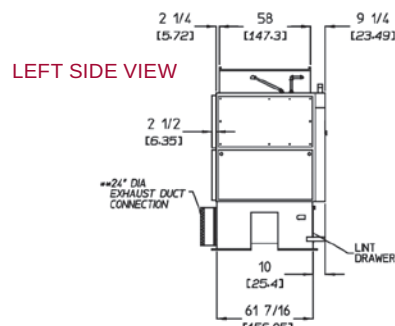
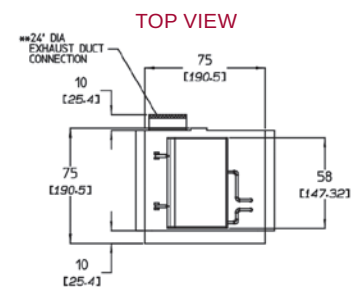
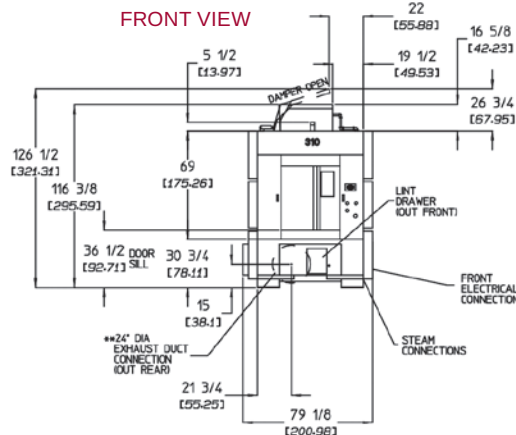


AD-310

AD-310 TILTING* 1-DOOR/FORWARD- AND REAR-TILT GAS MODEL



AD-310 TILTING* 1-DOOR/FORWARD- AND REAR-TILT STEAM MODEL



- * BOTH GAS AND STEAM TILTING UNITS MUST BE SUPPLIED WITH CLEAN, DRY, REGULATED AIR AT 80 PSI ± 10 PSI (5.52 BAR ± .69 BAR).
- ** DUCTWORK SIZE VARIES WITH INSTALLATION CONDITIONS. EXHAUST STATIC PRESSURE SHOULD NOT EXCEED 0.3" WATER COLUMN (0.74 mm).
- *** SIZE OF PIPING TO DRYER VARIES WITH INSTALLATION CONDITIONS. CONTACT FACTORY FOR ASSISTANCE.