

460-LB CAPACITY INDUSTRIAL DRYER

AD-464



ADC's industrial dryers are built upon the principle of large capacity and swift production at an affordable price. With full capacity tumblers and various door and tilt configurations, you are assured the ability to dry fast and efficiently without the large price tag. We offer a unique design for demanding applications.

UP TO FOUR LOADS PER HOUR

Productivity is the benchmark by which all large tumblers are measured. The AD-464 can dry up to four loads per hour of terry towels.

STAINLESS STEEL BASKET AS STANDARD

ADC uses a 14-gauge stainless steel basket supported on machine tumbler rings for durability and smooth tumbler rotation.

ANTI-WRINKLE FEATURE

The AD-464 PLC (programmable logic controller) has our unique "anti-wrinkle" feature already programmed into each cycle. With "anti-wrinkle," the dryer is programmed to tumble without heat should the attendant not be aware that the cycle is finished.



STANDARD FEATURES

- 175 cu. ft. basket
- Stainless Steel Standard Basket
- 7-1/2 HP enclosed motor
- Drying Controls
- Load/Unload Controls
- 11" Diameter Drive Wheels
- Two Lint Drawers
- Automatic Compressed Air Fan Cleaning System

OPTIONAL FEATURES

- Gas Burner (2.8 million BTU/hr) Model Available (ADG-464)
- Steam-Heated Model Available (ADS-464)

See adclaundry.com for warranty details.

*Test results may vary by location.

VISIT ADCLAUNDRY.COM FOR MORE INFORMATION.

460-LB CAPACITY INDUSTRIAL DRYER

AD-464

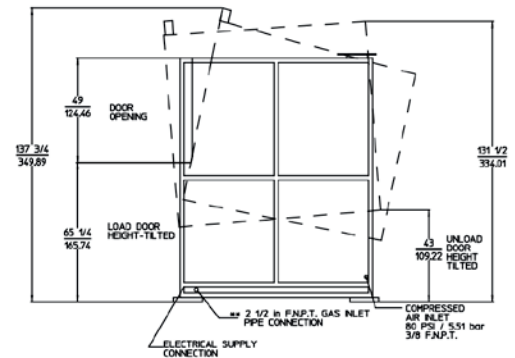
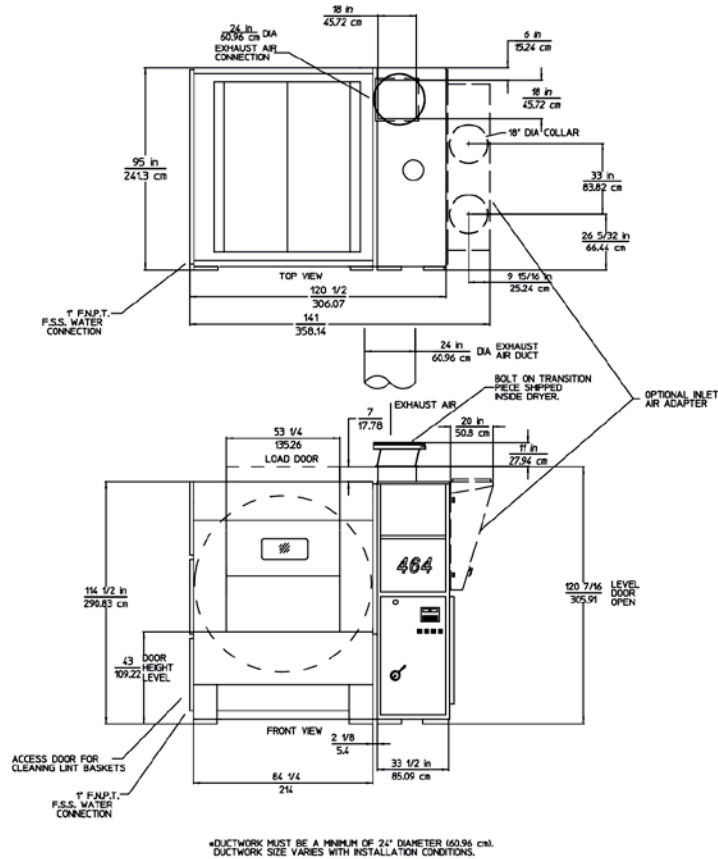


SEE DIMENSION
DRAWINGS ON
NEXT PAGE

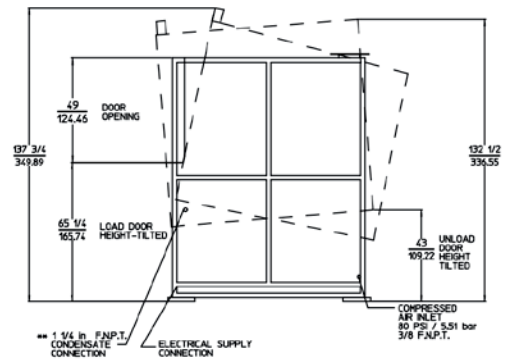
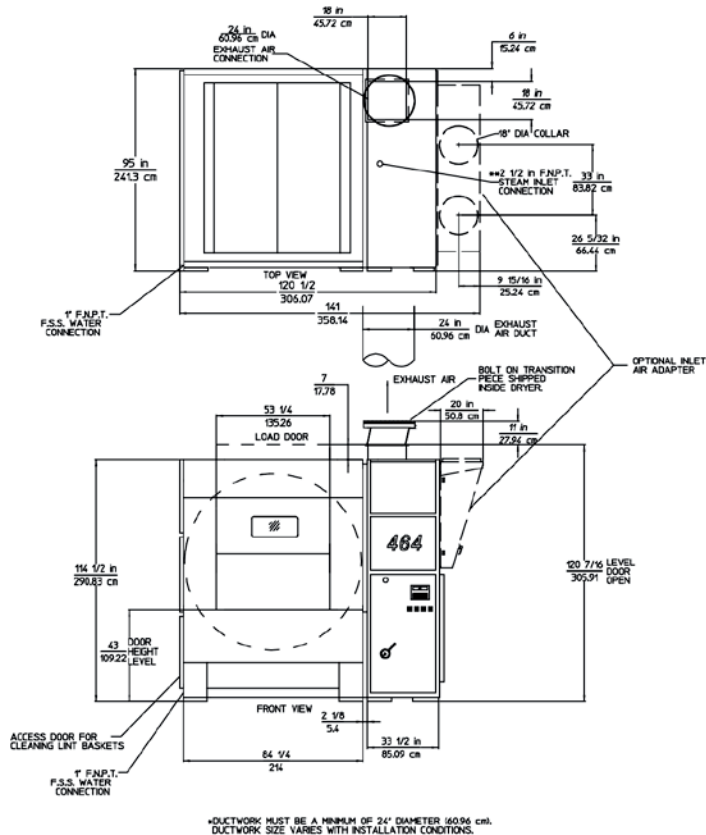
AD-464 INDUSTRIAL	GAS	STEAM
CAPACITY		
Maximum Capacity Dry Weight — lbs (kg)	460 (208.65)	460 (208.65)
Minimum Load Size — lbs (kg)	250 (113.40)	250 (113.40)
Tumbler Diameter — in. (cm)	69-1/8 (175.59)	69-1/8 (175.59)
Tumbler Depth — in. (mm)	80-5/16 (203.99)	80-5/16 (203.99)
Tumbler Volume — cu. ft. (L)	175 (4955.44)	175 (4955.44)
Tumbler/Drive Motor — hp (kW)	7-1/2 (5.59)	7-1/2 (5.59)
Blower/Fan Motor — hp (kW)	25 (18.64)	25 (18.64)
DIMENSIONS		
Cabinet Width — in. (cm)	122 (309.88)	122 (309.88)
Cabinet Operating Height, Level — in. (cm)	121 (307.34)	121 (307.34)
Cabinet Rear-Tilt Height — in. (cm)	138-1/4 (351.16)	138-1/4 (351.16)
Cabinet Operating Depth, Level — in. (cm)	95 (241.30)	95 (241.30)
Cabinet Full-Tilt Depth — in. (cm)	118 (299.72)	118 (299.72)
Rear-Tilt — deg	15	15
Front-Tilt — deg	15	15
Door Opening (width x height) — in. (cm)	53-1/4 x 49 (135.26 x 124.46)	53-1/4 x 49 (135.26 x 124.46)
Door Sill Height, Level — in. (cm)	45 (114.30)	45 (114.30)
Door Sill Height, Rear-Tilt — in. (cm)	43-3/4 (111.13)	43-3/4 (111.13)
Door Sill Height, Front-Tilt — in. (cm)	65-5/8 (166.70)	65-5/8 (166.70)
Compressed Air Volume (1-way/2-way tilt) — cfm (cmh)	15 (0.42) / 19 (0.54)	16 (0.45) / 20 (0.57)
Compressed Air Connection — in.	3/8 F.N.P.T.	3/8 F.N.P.T.
Exhaust Connection (diameter) — in.	24 (60.96)	24 (60.96)
Water Connection — in.	1 F.N.P.T.	1 F.N.P.T.
APPROXIMATE WEIGHT		
Approximate Net Weight — lb (kg)	10,270 (4,658.39)	11,000 (4,989.52)
Approximate Shipping Weight — lb (kg)	10,425 (4,728.70)	11,162 (5,063)
Voltage Available	208-480V 3ø 3,4w 50 / 60 Hz	208-480V 3ø 3,4w 50 / 60 Hz
Airflow — CFM (CMM)	13,000 (368.12)	13,000 (368.12)
Heat Input — BTU/hr (kcal/hr)	2,800,000 (705,588)	N/A
Maximum Gas Pressure — WC (mb)	12 (29.89)	N/A
Maximum Exhaust Back Pressure — WC (mb)	1.25 (3.11)	1.25 (3.11)
Gas Inlet Connection Size — in.	2-1/2 F.N.P.T.	N/A
Steam Consumption — lb/hr (kg/hr)	N/A	2,071 (939.39)
Operating Steam Pressure — psi max (bar)	N/A	125 (8.62)
Boiler Horsepower (Normal Load) — Bph	N/A	60
Supply Connection — in.	N/A	2-1/2 F.N.P.T.
Return Connection — in.	N/A	1-1/4 F.N.P.T.

460-LB CAPACITY INDUSTRIAL DRYER

AD-464



** SIZE OF PIPING TO DRYER VARIES WITH INSTALLATION CONDITIONS. CONTACT FACTORY FOR ASSISTANCE.



** SIZE OF PIPING TO DRYER VARIES WITH INSTALLATION CONDITIONS. CONTACT FACTORY FOR ASSISTANCE.