

# 45-LB CAPACITY COIN STACK DRYER

AD-45x2Ri



The i-Series dryer from ADC™ offers versatility and customized solutions to help vended owners maximize potential revenue and turnover. We've designed the i-Series with owners in mind, delivering results with consistent performance, optimized dry times, and reliable operations, it's easy to see what makes the ADC™ a popular choice for vended locations.

## INTELLIGENT INVERTER DRIVE

Alternates the speed of the drum throughout the cycle: Allowing for a soft controlled start and optimized tumbling during drying. The inverter drive also features a simple and reliable single drive belt system making for easy serviceability.

## FULLY-INSULATED CABINET

The preheat function helps to recover heat that is typically lost into the room by diverting it into the burner to warm the incoming air. This helps to improve dry times and overall throughput.

## STAINLESS STEEL BASKET & FRONT

The i-Series comes standard with a stainless-steel basket and front panel helping to modernize the look of your vended location and protect against corrosion.

The AD Series offers an optional stainless-steel basket and front panel helping to modernize the look of your vended location and protect against corrosion.



### STANDARD FEATURES

- 20% more efficiency
- Fast drying times
- Two-point roller system
- Stainless steel fronts standard
- Stainless steel basket standard
- Trans-axial airflow
- Single-phase reversing basket
- Available in gas only
- Phase-7 micro-controls

### OPTIONAL FEATURES

- Optimal double-pane door glass
- S.A.F.E. (Sensor Activated Fire Extinguishing System)

See [adclaundry.com](http://adclaundry.com) for warranty details.

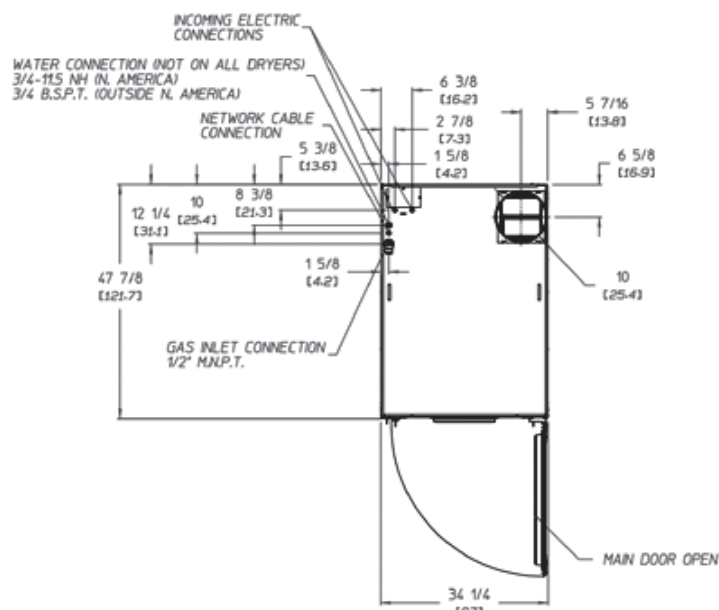
VISIT [ADCLAUNDRY.COM](http://ADCLAUNDRY.COM) FOR MORE INFORMATION.

# 45-LB CAPACITY COIN STACK DRYER

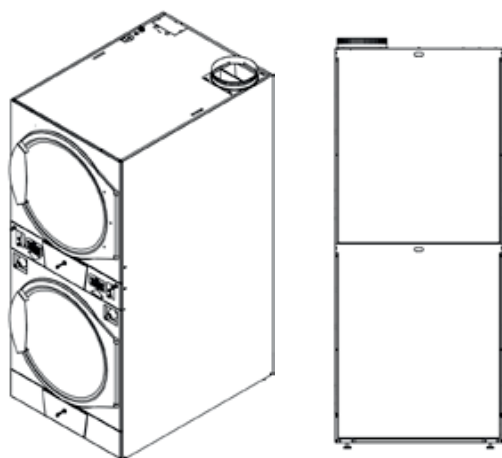
AD-45x2Ri



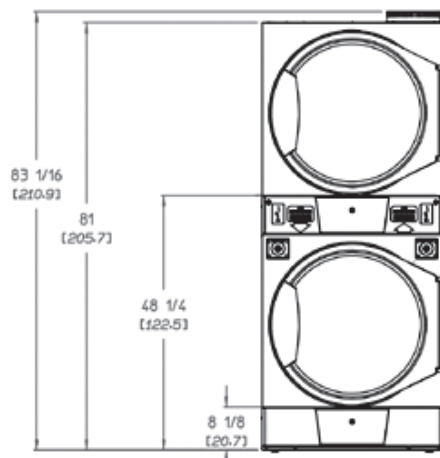
## TOP VIEW



## REAR VIEW



## FRONT VIEW



AD-45x2Ri COIN READY	GAS
<b>CAPACITY</b>	
Maximum Capacity Dry Weight (per pocket) — lbs (kg)	45 (20.4)
Tumbler Diameter — in. (cm)	32-3/4 (83.2)
Tumbler Depth — in. (mm)	30 (76.2)
Tumbler Volume (per pocket) — cu. ft. (L)	14.6 (413.4)
Tumbler/Drive Motor (per pocket) — hp (kW)	1/3 (0.25)
Blower/Fan Motor (per pocket) — hp (kW)	1/2 (.37)
<b>DIMENSIONS</b>	
Door Opening (diameter) — in. (cm)	27 (68.6)
Door Sill Height — in. (cm)	Top pocket 50.4 (128) Bottom pocket 10.3 (26.2)
Dryers per 20'/40' Container	10 / 21
Dryers per 48'/53' Truck	25 / 28
<b>APPROXIMATE WEIGHT</b>	
Approximate Net Weight — lb (kg)	640 (290)
Approximate Shipping Weight — lb (kg)	700 (318)
Voltage Available	120-240V 1Ø 2w 50 / 60 Hz
Airflow (per pocket) 50 HZ — CFM (CMM)	525 (14.9)
Airflow (per pocket) 60 HZ — CFM (CMM)	440 (12.5)
Heat Input (per pocket) — BTU/hr (kcal/hr)	94,000 (23,688)
Gas Inlet Connection Size — in.	1/2" M.N.P.T. (male) 1/2" B.S.P.T. (female) (CE and Australia)
Exhaust Connection (diameter) — in. (cm)	10 (25.4)