

50-LB CAPACITY COIN DRYER

AD-50i



The i-Series dryer from ADC™ offers versatility and customized solutions to help vended owners maximize potential revenue and turnover. We've designed the i-Series with owners in mind, delivering results with consistent performance, optimized dry times, and reliable operations, it's easy to see what makes the ADC™ a popular choice for vended locations.

INTELLIGENT INVERTER DRIVE

Alternates the speed of the drum throughout the cycle: Allowing for a soft controlled start and optimized tumbling during drying. The inverter drive also features a simple and reliable single drive belt system making for easy serviceability.

FULLY-INSULATED CABINET

The preheat function helps to recover heat that is typically lost into the room by diverting it into the burner to warm the incoming air. This helps to improve dry times and overall throughput.

STAINLESS STEEL BASKET & FRONT

The i-Series comes standard with a stainless-steel basket and front panel helping to modernize the look of your vended location and protect against corrosion.

The AD Series offers an optional stainless-steel basket and front panel helping to modernize the look of your vended location and protect against corrosion.



STANDARD FEATURES

- Variable drum speed
- Pre-heat system
- Trans-axial airflow
- Fully-insulated cabinet
- Self-cleaning lint screen
- Direct spark ignition
- Two-point roller support
- "IMC®" intuitive micro control with auto-dry system
- Single-phase reversing basket
- Stainless steel basket and fronts
- Simplified inverter drive system
- Fits through standard 36" door
- Available in gas, electric & steam

OPTIONAL FEATURES

- Double-pane door glass
- S.A.F.E. (Sensor Activated Fire Extinguishing System)
- Automatic Airflow Compensator (AAFC)*

*Optional AAFC adjusts exhaust fan speed to improve exhaust flow with increased back pressure caused by installation issues. This exclusive patented technology adjusts fan speed and enhances dryer performance. Measurements are calculated in real-time, on an ongoing basis to optimize dry-times and efficiency.

See adclaundry.com for warranty details.

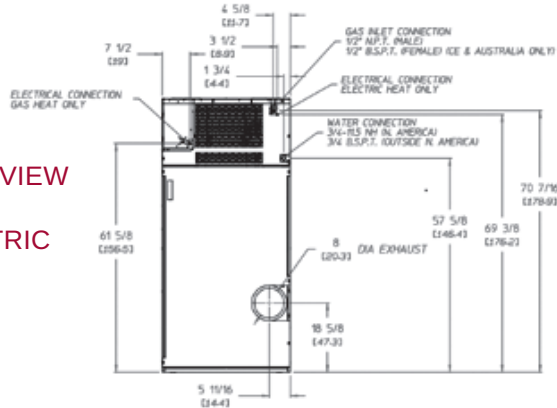
VISIT ADCLAUNDRY.COM FOR MORE INFORMATION.

50-LB CAPACITY COIN DRYER

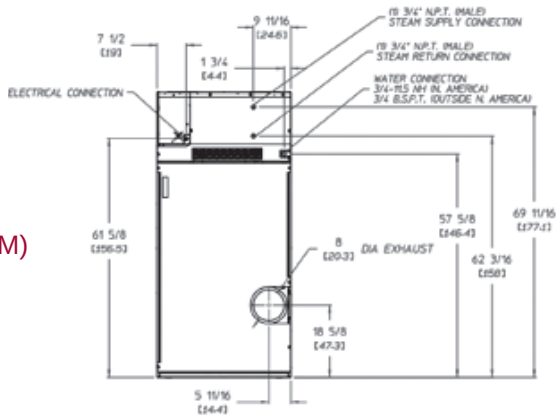
AD-50i



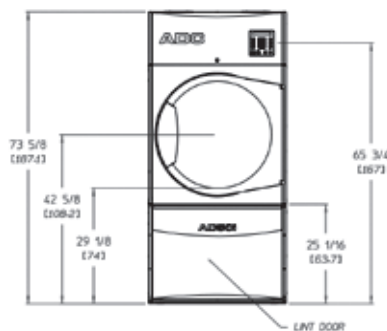
REAR VIEW
GAS &
ELECTRIC



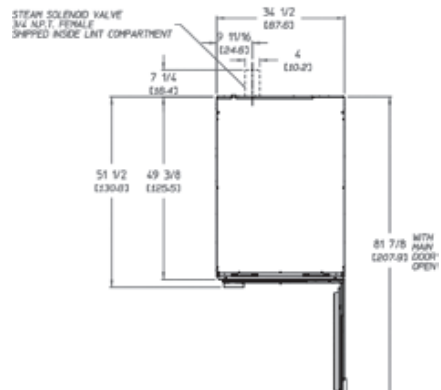
REAR
VIEW
(STEAM)



FRONT
VIEW



PLAN
VIEW



AD-50i COIN READY	ELECTRIC	GAS	STEAM
CAPACITY			
Maximum Capacity Dry Weight — lbs (kg)	50 (22.67)	50 (22.67)	50 (22.67)
Tumbler Diameter — in. (cm)	32-3/4 (83.18)	32-3/4 (83.18)	32-3/4 (83.18)
Tumbler Depth — in. (mm)	37-1/2 (95.25)	37-1/2 (95.25)	37-1/2 (95.25)
Tumbler Volume — cu. ft. (L)	18.3 (518.19)	18.3 (518.19)	18.3 (518.19)
Tumbler/Drive Motor — hp (kW)	1 (0.75)	1 (0.75)	1 (0.75)
Blower/Fan Motor* — hp (kW)	3/4 (.56)	3/4 (.56)	3/4 (.56)
DIMENSIONS			
Cabinet Width — in. (cm)	34-1/2 (87.63)	34-1/2 (87.63)	34-1/2 (87.63)
Cabinet Depth — in. (cm)	49-3/8 (125.41)	49-3/8 (125.41)	49-3/8 (125.41)
Cabinet Height — in. (cm)	73-5/8 (187.1)	73-5/8 (187.1)	73-5/8 (187.1)
Door Opening (diameter) — in. (cm)	27 (68.58)	27 (68.58)	27 (68.58)
Door Sill Height — in. (cm)	29-1/8 (74)	29-1/8 (74)	29-1/8 (74)
Water Connection	3/4" - 11.5 NH (North America) 3/4" B.S.P.T. (Outside North America)		
Dryers per 20'/40' Container	10 / 20		
Dryers per 48'/53' Container	25 / 28		
APPROXIMATE WEIGHT			
Approximate Net Weight — lb (kg)	660 (299.37)	655 (297.10)	685 (310.71)
Approximate Shipping Weight — lb (kg)	715 (324.31)	710 (322.05)	745 (337.92)
Voltage Available	120-480V 1,3ø 2,3,4w 50 / 60 Hz	120-480V 1,3ø 2,3w 50 / 60 Hz	120-480V 1,3ø 2,3w 50 / 60 Hz
Airflow 50 HZ — CFM (CMM)	714 (20.21)	810 (22.93)	767 (21.71)
Airflow 60 HZ — CFM (CMM)	746 (21.12)	850 (24.06)	920 (26.05)
Heat Input — BTU/hr (kcal/hr)	N/A	125,000 (31,500)	N/A
Gas Inlet Connection Size — in.	N/A	1/2" N.P.T. (male) 1/2" B.S.P.T. (female) (CE and Australia)	N/A
Exhaust Connection (diameter) — in. (cm)	8 (20.32)	8 (20.32)	8 (20.32)
Oven Size	18.5 kW / 63,124 BTU / 15,907 Kcal	N/A	N/A
	20.4 kW / 69,607 BTU / 17,540 Kcal	N/A	N/A
	22 kW / 75,067 BTU / 18,916 Kcal	N/A	N/A
Steam Consumption (Max) — lb/hr (kg/hr)	N/A	N/A	105 (47.62)
Operating Steam Pressure — psi max (bar)	N/A	N/A	150 (10.34)
Boiler Horsepower (normal load) — Bhp	N/A	N/A	2.7
Supply Connection	N/A	N/A	(1) 3/4" N.P.T. (male)
Return Connection	N/A	N/A	(1) 3/4" N.P.T. (male)

*Blower/fan motor for single-phase steam is 1 hp (0.75 kW). Blower/fan motor for 3-phase, all heat, is 1 hp (0.75 kW).