

30-LB CAPACITY OPL STACK DRYER

AD-30x2Ri



Our i-Series Dryer Lineup offers versatility and customized solutions to help reinforce facility throughput in on-premise markets.

From the standard Stainless steel basket and front panel (which help protect against corrosion) to the multi-lingual, customizable and intelligent controls: We've designed an on-premise drying machine, engineered to help save money on utilities, payroll, and maintenance- all thanks to our innovative design.

With consistent performance, optimized dry times, and reliable operations, it's easy to see why ADC™ is a popular choice.

INTELLIGENT INVERTER DRIVE

Alternates the speed of the drum throughout the cycle: Allowing for a soft controlled start and optimized tumbling during drying. The inverter drive also features a simple and reliable single drive belt system making for easy serviceability.

FULLY-INSULATED CABINET

The preheat function helps to recover heat that is typically lost into the room by diverting it into the burner to warm the incoming air. This helps to improve dry times and overall throughput.

STAINLESS STEEL BASKET & FRONT

The i-Series comes standard with a stainless-steel basket and front panel helping to protect against corrosion.

The AD Series offers an optional stainless-steel basket and front panel helping to protect against corrosion.



STANDARD FEATURES

- 20% more efficiency
- Fast drying times
- 5-year limited warranty on parts
- Two-point roller system
- Stainless steel fronts standard
- Stainless steel basket standard
- Trans-axial airflow
- Single-phase reversing basket
- Double-pane door glass
- S.A.F.E. (Sensor Activated Fire Extinguishing System)
- Phase-7 micro controls with auto-dry
- Available in gas only

See adclaundry.com for warranty details.

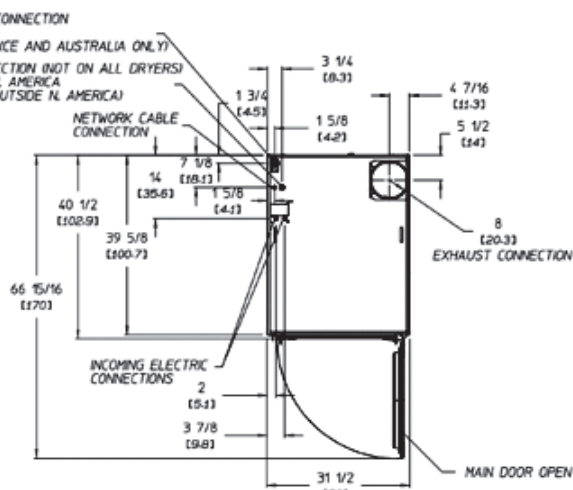
VISIT ADCLAUNDRY.COM FOR MORE INFORMATION.

30-LB CAPACITY OPL STACK DRYER

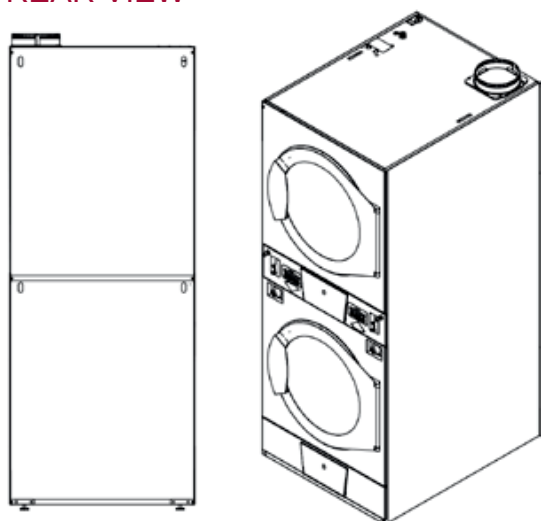
AD-30x2Ri



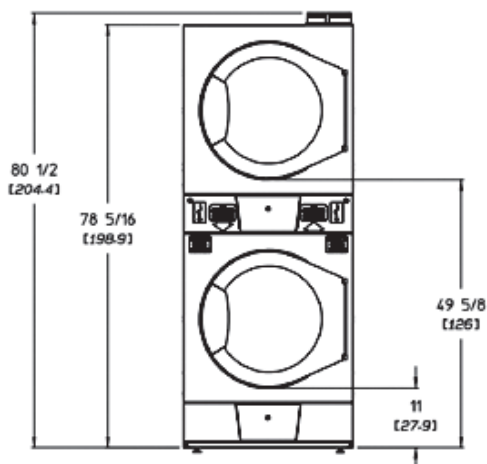
TOP VIEW



REAR VIEW



FRONT VIEW



AD-30x2Ri OPL	GAS
CAPACITY	
Maximum Capacity Dry Weight (per pocket) — lbs (kg)	30 (13.6)
Tumbler Diameter — in. (cm)	30 (76.2)
Tumbler Depth — in. (mm)	27 (68.5)
Tumbler Volume (per pocket) — cu. ft. (L)	11 (311.5)
Tumbler/Drive Motor (per pocket) — hp (kW)	1/4 (0.19)
Blower/Fan Motor (per pocket) — hp (kW)	1/2 (.37)
DIMENSIONS	
Door Opening (diameter) — in. (cm)	21-1/2 (54.6)
Door Sill Height — in. (cm)	Top pocket 51-3/4 (131.4) Bottom pocket 13-1/8 (33.3)
Dryers per 20' / 40' Container	14 / 28
Dryers per 48' / 53' Truck	36 / 42
APPROXIMATE WEIGHT	
Approximate Net Weight — lb (kg)	520 (236)
Approximate Shipping Weight — lb (kg)	550 (249)
Voltage Available	120-240V 1ø 2w 50 / 60 Hz
Airflow (per pocket) 50 HZ — CFM (CMM)	450 (12.74)
Airflow (per pocket) 60 HZ — CFM (CMM)	375 (10.6)
Heat Input (per pocket) — BTU/hr (kcal/hr)	72,000 (18,144)
Gas Inlet Connection Size — in.	1/2" M.N.P.T. (male) 1/2" B.S.P.T. (female) (CE and Australia)
Exhaust Connection (diameter) — in. (cm)	8 (20.3)