

50-LB CAPACITY OPL DRYER

AD-50i



Our i-Series Dryer Lineup offers versatility and customized solutions to help reinforce facility throughput in on-premise markets.

From the standard Stainless steel basket and front panel (which help protect against corrosion) to the multi-lingual, customizable and intelligent controls: We've designed an on-premise drying machine, engineered to help save money on utilities, payroll, and maintenance- all thanks to our innovative design.

With consistent performance, optimized dry times, and reliable operations, it's easy to see why ADC™ is a popular choice.

INTELLIGENT INVERTER DRIVE

Alternates the speed of the drum throughout the cycle: Allowing for a soft controlled start and optimized tumbling during drying. The inverter drive also features a simple and reliable single drive belt system making for easy serviceability.

FULLY-INSULATED CABINET

The preheat function helps to recover heat that is typically lost into the room by diverting it into the burner to warm the incoming air. This helps to improve dry times and overall throughput.

STAINLESS STEEL BASKET & FRONT

The i-Series comes standard with a stainless-steel basket and front panel helping to protect against corrosion.

The AD Series offers an optional stainless-steel basket and front panel helping to protect against corrosion.



STANDARD FEATURES

- Variable drum speed
- Pre-heat system
- Trans-axial airflow
- Fully-insulated cabinet
- Double-pane door glass
- Self-cleaning lint screen
- Direct spark ignition
- Two-point roller support
- "IMC®" intuitive micro control with auto-dry system
- S.A.F.E. (Sensor Activated Fire Extinguishing System)
- Single-phase reversing basket
- Stainless steel basket and fronts
- Simplified inverter drive system
- Fits through standard 36" door
- Available in gas, electric & steam

OPTIONAL FEATURES

- Automatic Airflow Compensator (AAFC)*

*Optional AAFC adjusts exhaust fan speed to improve exhaust flow with increased back pressure caused by installation issues. This exclusive patented technology adjusts fan speed and enhances dryer performance. Measurements are calculated in real-time, on an ongoing basis to optimize dry-times and efficiency.

See adclaundry.com for warranty details.

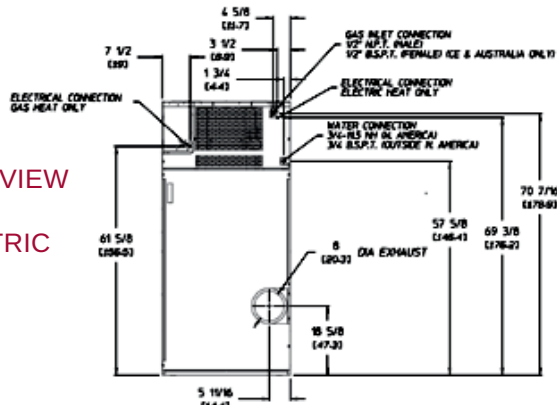
VISIT ADCLAUNDRY.COM FOR MORE INFORMATION.

50-LB CAPACITY OPL DRYER

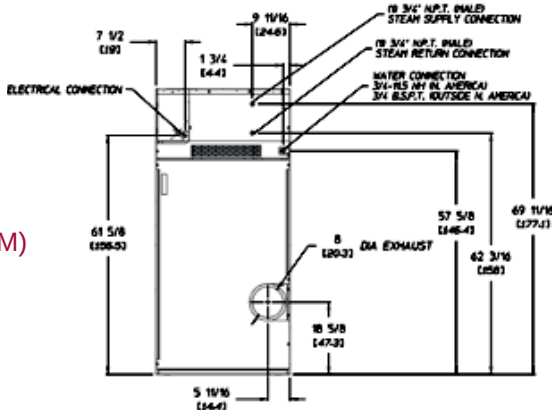
AD-50i



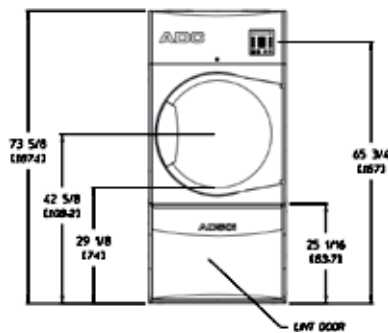
REAR VIEW
GAS &
ELECTRIC



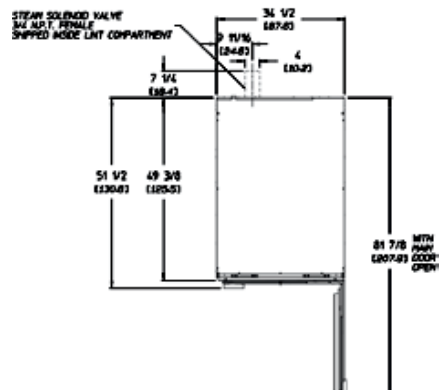
REAR VIEW
(STEAM)



FRONT VIEW



PLAN VIEW



AD-50i OPL	ELECTRIC	GAS	STEAM
CAPACITY			
Maximum Capacity Dry Weight — lbs (kg)	50 (22.67)	50 (22.67)	50 (22.67)
Tumbler Diameter — in. (cm)	32-3/4 (83.18)	32-3/4 (83.18)	32-3/4 (83.18)
Tumbler Depth — in. (mm)	37-1/2 (95.25)	37-1/2 (95.25)	37-1/2 (95.25)
Tumbler Volume — cu. ft. (L)	18.3 (518.19)	18.3 (518.19)	18.3 (518.19)
Tumbler/Drive Motor — hp (kW)	1 (0.75)	1 (0.75)	1 (0.75)
Blower/Fan Motor* — hp (kW)	3/4 (.56)	3/4 (.56)	3/4 (.56)
DIMENSIONS			
Cabinet Width — in. (cm)	34-1/2 (87.63)	34-1/2 (87.63)	34-1/2 (87.63)
Cabinet Depth — in. (cm)	49-3/8 (125.41)	49-3/8 (125.41)	49-3/8 (125.41)
Cabinet Height — in. (cm)	73-5/8 (187.1)	73-5/8 (187.1)	73-5/8 (187.1)
Door Opening (diameter) — in. (cm)	27 (68.58)	27 (68.58)	27 (68.58)
Door Sill Height — in. (cm)	29-1/8 (74)	29-1/8 (74)	29-1/8 (74)
Water Connection	3/4" - 11.5 NH (North America) 3/4" B.S.P.T. (Outside North America)		
Dryers per 20'/40' Container	10 / 20		
Dryers per 48'/53' Container	25 / 28		
APPROXIMATE WEIGHT			
Approximate Net Weight — lb (kg)	660 (299.37)	655 (297.10)	685 (310.71)
Approximate Shipping Weight — lb (kg)	715 (324.31)	710 (322.05)	745 (337.92)
Voltage Available	208-480V 1,3ø 2,3,4w 50 / 60 Hz	120-480V 1,3ø 2,3w 50 / 60 Hz	120-480V 1,3ø 2,3w 50 / 60 Hz
Airflow 50 HZ — CFM (CMM)	714 (20.21)	810 (22.93)	767 (21.71)
Airflow 60 HZ — CFM (CMM)	746 (21.12)	850 (24.06)	920 (26.05)
Heat Input — BTU/hr (kcal/hr)	N/A	125,000 (31,500)	N/A
Gas Inlet Connection Size — in.	N/A	1/2" N.P.T. (male) 1/2" B.S.P.T. (female) (CE and Australia)	N/A
Exhaust Connection (diameter) — in. (cm)	8 (20.32)	8 (20.32)	8 (20.32)
Oven Size	18.5 kW / 63,124 BTU / 15,907 Kcal	N/A	N/A
	20.4 kW / 69,607 BTU / 17,540 Kcal	N/A	N/A
	22 kW / 75,067 BTU / 18,916 Kcal	N/A	N/A
Steam Consumption (Max) — lb/hr (kg/hr)	N/A	N/A	105 (47.62)
Operating Steam Pressure — psi max (bar)	N/A	N/A	150 (10.34)
Boiler Horsepower (normal load) — Bhp	N/A	N/A	2.7
Supply Connection	N/A	N/A	(1) 3/4" N.P.T. (male)
Return Connection	N/A	N/A	(1) 3/4" N.P.T. (male)

*Blower/fan motor for single-phase steam is 1 hp (0.75 kW). Blower/fan motor for 3-phase, all heat, is 1 hp (0.75 kW).